

Spirit of **GIVING**

Transforming *Together*

*Inspiration from
Romans 12:2*

Also in this issue:

Following the leader

You are a Miracle Maker

The Yellow Door Project

Transforming Neonatal Intensive
Care in Northeast Texas



Feature stories

7 Joyful
Jack Bryans

10 A Toast to
East Texas

22 Vantage
Point

Contributions

- 6 Images from an AMAZING year
- 8 Miracles Begin With You!
- 12 Miracle Run
- 15 It's Hip to be Square
- 17 Louis W. Owen Lung Center dedication
- 18 NICU expansion announcement
- 21 Annual Report - Transformational Giving
- 24 Friends of the Foundation gift report
- 43 Sister Irene – Widening her mission field



On the cover
4 Transforming Together

Spirit of GIVING

Welcome to *Spirit of Giving*, a publication for friends of CHRISTUS Trinity Mother Frances Foundation, a not-for-profit Texas organization. This magazine spotlights the generosity and involvement of the CHRISTUS Trinity Mother Frances family of benefactors and the impact of their philanthropy on the institution. In showcasing these individuals and the phenomenal programs at CHRISTUS Trinity Mother Frances Health System, we illustrate the power of philanthropy and its crucial role in building a healthier society.

Correspondence and inquiries should be addressed to:

Editor, *Spirit of Giving*
CHRISTUS Trinity Mother Frances Foundation
100 E. Ferguson | Suite 800
Tyler | TX 75702

Tel 903.606.4752
Fax 903.525.1234
foundation@tmfhc.org
cmn@tmfhc.org

Publisher
Robin Rowan

Managing Editor
Suzie Rippey

Contributors
Randy Childress
Sherri Durham
Scott Fossey
Nela Long
TYLER TODAY Magazine

Project Manager
Rae Champagne

Designer
Holly Izard

Photographers
Ken Godden
Noah Morris

If you do not wish to be contacted as part of our fundraising efforts, please notify the CHRISTUS Trinity Mother Frances Foundation in writing at 100 E. Ferguson | Suite 800 Tyler | TX 75702.

CHRISTUS Trinity Mother Frances Foundation Team

Scott Fossey
Vice President Group
Philanthropy, CHRISTUS
Health - Northeast Texas
Robin Rowan
Executive Director, CHRISTUS
Trinity Mother Frances
Foundation
Sherri Durham
Financial Assistant

Edie Gobert
Executive Assistant
Nela Long
Manager, Annual Giving
and Grants
Ben March
Senior Development Officer
Christina Mosier
Program Manager, Children's
Miracle Network Hospitals

Kristi Payne
Regional Financial Assistant
Suzie Rippey
Manager, Events and
Communications
Patrick R. Thomas, MD
Senior Development Officer
Jenny Vann
Constituent Strategist

2018 – 2019 Board of Directors CHRISTUS Trinity Mother Frances Foundation

Dennis Box
Thomas J. Brown
James A. Caccitolo, MD
Randall V. Childress
John Gaston
Terry Giles
Chris Glenney
Marilyn Hardy
Steve Hellmuth

Steve Keuer, MD*
Michael Mahfood
Sister Malgorzata Majszczyk
Brian McCabe
Andy Navarro*
Laura Redman
Linda Rowe
Scott Smith, MD*
Jerry Spencer

Bishop Joseph E. Strickland
Patrick R. Thomas, MD **
Clayton Whitney, MD
John P. Williams, Chair

*Ex-Officio
**Emeritus





Following the leader



Scott Fossey
Vice President
Group Philanthropy
CHRISTUS Health -
Northeast Texas

“He who began a good work in you, will bring it to completion at the day of Jesus Christ.”

Philippians 1:6

One of my favorite comic strips growing up was Calvin and Hobbes by Bill Watterson. It’s about a little boy named Calvin and his adventures with his best friend Hobbes, a stuffed tiger who has come to life. Calvin invents a “Transmogrifier,” a machine which allows him to step in, set the appropriate dials and turn himself into whatever he’d like to be.

At the time I was enjoying the comic, I didn’t realize that “transmogrify” is actually a real word! The Oxford Dictionary defines it, “to transform, especially in a surprising or magical way.”

You’ve seen something transmogrify, or transform, if you’ve ever watched the process of a caterpillar becoming a butterfly. You can use transmogrify when a person or thing changes in a way that surprises you: a fairy tale frog transmogrifies into a prince in one well-known story, and Cinderella finds her handsome prince with the help of her fairy godmother.

We, as a health system, have been through a lot of changes in the last two years. We added CHRISTUS to our name; we went from the color burgundy to the color purple; we strengthened our message through our mission statement – to extend the healing ministry of Jesus Christ.

If you have been on our Tyler campus in the last year, you have seen firsthand how much transformation is taking place. We have completed the new parking garage, and construction has begun on the six-floor Bradley-Thompson Tower which will house a state-of-the-art Emergency Care Center.

My role in the Foundation has changed as well. Now, as Vice President of Group Philanthropy for our Northeast Texas ministries, I spend a lot of time on the road to our Foundation offices in Sulphur Springs, Longview, Marshall and Texarkana, as we transform from a single group to a collective group.

Another positive change - Robin Rowan, who has been the Director of Children’s Miracle Network Hospitals and with the Foundation for twenty plus years, has moved into the role of Executive Director of the Tyler Ministry.

Gratefully, what has not changed is the support from individuals and corporations in our community and across Northeast Texas. We are awed by your incredible willingness to give meaningful gifts to help your neighbors in our region. The need for private support, through our Red Door Project and Yellow Door Project campaigns, and on an annual basis, is vital for CHRISTUS Trinity Mother Frances’ ability to transform health care for the people of Northeast Texas.

Although these changes may feel surprising at times, try to see them as a metamorphosis. Like the butterfly that emerges from the cocoon, there exists a “magical” quality in the things we will be able to accomplish in the future as we *transmogrify*.

Transforming *Together*





Robin Rowan
Executive Director
CHRISTUS Trinity Mother
Frances Foundation

“Do not conform yourselves to the behavior and customs of this world, but let God transform you inwardly by changing the way you think.”

Romans 12:2

Have you ever watched a caterpillar inching along a fence rail? They are slow, lumpy and extremely awkward, and they spend their lives chowing down on leaves. They certainly don't look anything like what we know they are destined to become. Then one day the caterpillar begins to shed its skin, revealing a hard protective shell that will be his home for the change to come. It's an awesome thing to watch one of nature's miracles—the transformation from a non-descript caterpillar – to the breathtakingly beautiful winged aviator we call the butterfly. This metamorphosis is the classic example of transformation, defined as *a profound, fundamental change in form from one stage to the next.*

Transformation is a process. It is a faith journey, a growth experience, a reach for something and a significant change. As generous supporters of CHRISTUS Trinity Mother Frances Health System, you make a deliberate choice to help us transform health care for your family, your friends and your neighbors. You have made a difference in the lives of others, but at the same time, you are making a difference in your own life, in a very good way.

This year's annual report reflects this spirit of transformation. We hope you are inspired by the rich stories featured – the advancements that would not have been made without your help – addressing the pressing health care needs in our ministries. We are heartened by the wonderful response of Northeast Texans toward supporting the Red Door Project, creating a new legacy of ER care for all in our region. We are grateful for the many supporters whose generosity set a new record for A Toast to East Texas 2018, ensuring that our children will have dedicated Emergency Room space in their time of need. We are encouraged by the thousands who work and give and promote the many Children's Miracle Network Hospital events throughout the year, showing their heart for the welfare of children through their tireless support. It is clear we are all devoted to making a transformational difference and building thriving communities.

As you read through the pages of *Spirit of Giving 2018*, take note of the stories of Grateful Patients whose exceptional care in our CHRISTUS facilities has inspired their gifts of support. Be encouraged by the story of Miracle Child Jack Bryans and his family, who live every day with courage and conviction, and with hope. Be moved by the beauty created by our featured local artists. Be motivated by the efforts of the next generation of volunteers, the SFA and UT Tyler college students, who host the two dance marathons. We are certain that your *spirit of giving* is not only making an enduring impact in your community, but also transforming your own hearts in a very special way. Together we are transforming lives!



CMNH Muscles for Miracles



CMNH Dance Marathon at Stephen F. Austin



MIX 93.1 Radiothon benefiting CMNH

Images from an AMAZING year

What a great year it has been! Every day the members of the Foundation team are blessed to feel firsthand the collective passion and spirit of giving of our donors, partners, board members, Associates and volunteers.



CMNH Plant Sale



The Romeo Coffee Club dedicates a leaf at CHRISTUS Mother Frances Hospital - Winnsboro



La Invasora Radiothon with CMNH



Mothers and Miracles in May!



The Glenney family enjoys CMNH Celebration



Mad Hatter's Ball at Dakotas benefiting CMNH



Choosing JOY in ALL things

2018 Miracle Child – "Joyful" Jack Bryans

The Bryans have four amazing children. Luke, Jordan and Molly were all born at CHRISTUS Mother Frances Hospital - Tyler, but 2018 Miracle Child, "Joyful" Jack came into the Bryans family a little differently.

Parents, Renae and Casey, became licensed foster parents in April 2013, and quickly received a call for their first foster child, a three-week old baby boy who was in the Neonatal Intensive Care Unit at CHRISTUS Mother Frances Hospital - Tyler due to "failure to thrive."

After meeting Jack and caring for him alongside the NICU team, Renae and Casey took their baby boy home, knowing he would have some developmental delays. Jack was right at home with the Bryans, and they eventually adopted him into their family.

He continued to show signs of significant developmental delays, and his parents became increasingly concerned. By his first birthday, Jack was unable to sit up on his own. The Bryans knew they were facing something more complicated than general developmental delays. CHRISTUS Trinity Clinic pediatrician, Dr. Mark Barret, ran a series of tests including an MRI that revealed

lesions on Jack's brain, evidence of a metabolic disease. On January 22, 2016, Jack's diagnosis was confirmed as Leigh's Syndrome, a severe, progressive, and currently incurable neurometabolic mitochondrial disease that affects the entire body.

Laughing and smiling through life is how "Joyful Jack" received his nickname. He is surrounded by older siblings, parents and family friends who adore him, and is able to receive care in his hometown of Tyler, Texas. His dedicated team of caregivers are supported by resources provided by Children's Miracle Network Hospitals.

"There is no cure for this and it's a terrible diagnosis," Renae said. "It just reminds us to choose joy in all things and that life is a gift."

You can help children like Jack Bryans by supporting Children's Miracle Network Hospitals. One hundred percent of the funds raised locally stay at CHRISTUS Trinity Mother Frances Health System to provide life-saving pediatric equipment and medical services to children in our area.

Miracles begin with YOU!

On Thursday, January 26, two exceptional Miracle Makers were honored at the 6th Annual Miracles Begin *With You!* event at Willow Brook Country Club.

This special evening not only raised support for Children's Miracle Network Hospitals at CHRISTUS Mother Frances Hospital, but also gave the community the opportunity to recognize and celebrate some very special individuals who have made a transformational difference for our smallest patients.

"For The Kids" is the CMNH mantra, and no one embodies that phrase more faithfully than CHRISTUS Trinity Clinic Pediatrician **Dr. Mark Barret**. Since 1995, he has taken care of the health of thousands of children, including Miracle Child Jack Bryans. Those who know Dr. Barret know that his heart is not only in his work treating local children, but he is also globally invested in children's health. In 2006, Mark and his wife Monica were drawn to missionary work in Uganda, and in 2008 they helped found Parental Care Ministries USA. The Barret family travels regularly to Uganda with PCM, where they serve under-sourced communities. We honor Dr. Barret for his tireless work for the kids at home and abroad.

A dedicated advocate for children, "**Lucky**" **Larry Thompson** cannot hide the passion he has for Children's Miracle Network Hospitals. For twenty years, Lucky Larry has hit the airwaves each August to prompt his listeners to give from their hearts to help kids during the Mix With Kids Radiothon on Mix 93.1. He also serves as a member of the CMNH Community Advisory Board, which helps turn the money raised into miracle-making equipment and critical pediatric programs. We were thrilled to honor Lucky Larry Thompson for his passionate dedication to Children's Miracle Network Hospitals.

During the evening, a very surprised **Kathryn Bilberry** was honored with the *Mildred C. Crawford Heart For Children Award*, recognizing her volunteerism and her commitment to Children's Miracle Network Hospitals.

Thanks to generous supporters, more than \$72,202 was raised, funds that will provide vital pediatric services for children served by CHRISTUS Trinity Mother Frances Health System.

Please visit christustmf.org/cmnh to learn more about Children's Miracle Network Hospitals or make a gift.



Monica and Mark Barret with daughter Bailey Barret



Larry and Jana Thompson



Rachel Bitter, Marlo Bitter, Kathryn Bilberry and Madelyn Bilberry

Miracle Makers

Dr. Brenda Morris



One of the highest accolades celebrated by Children's Miracle Network Hospitals each year was awarded to a Miracle Maker from our own CHRISTUS family. **Dr. Brenda Morris**, Medical Director of the Neonatal Intensive Care Unit (NICU) at CHRISTUS Mother Frances Hospital – Tyler, received the 2018 Children's Miracle Network Hospitals *Miracle Achievement Award* during the Children's Miracle Network Hospitals Annual Conference in Florida this past March. Dr. Morris has been the force behind the Level III Neonatal Intensive Care Unit at CHRISTUS Mother Frances Hospital since its inception. She has worked tirelessly to ensure that our tiniest patients go home healthy. She was selected for this prestigious award from a field of exceptional caregivers and teams from 170 hospitals in North America.

With her team of servant-hearted caregivers, Dr. Morris has developed an extraordinary program here in Northeast Texas. The NICU is one example of the impact that Children's Miracle Network Hospitals has on the care of our community's children. Under the direction of Dr. Morris, the Neonatal Intensive Care Unit has grown to serve more than 400 children born too sick or too soon each year.

"We are thrilled that Dr. Morris was honored for her dedication to excellence in neonatal medicine," said Robin Rowan, Executive Director of the CHRISTUS Trinity Mother Frances Foundation. "She and her team are committed to continuing the tradition of excellence in the care of our most vulnerable patients, and she is very deserving of this honor."

Please join us in congratulating Dr. Brenda Morris!

CHRISTUS Trinity Mother Frances Health System has been the Northeast Texas Children's Miracle Network Hospital since 1987. Through CMNH's fundraising efforts, more than \$17 million in pediatric care support has been provided to our health system.

Pearls & Promises **A TOAST** to East Texas **2018**

Cheers to the CHRISTUS Trinity Mother Frances Foundation Women's Board, for the outstanding success of their third annual event, A Toast to East Texas! The Lord has truly blessed us with a community full of generous hearts!

From April 5 through May 24, the ten parties of A Toast to East Texas 2018 celebrated the creativity of our many party host groups in fabulous homes and venues all over East Texas. This year's choices included a Southern Italian cooking demonstration and poignant stories from a World War II war bride, a special auto viewing party where 80 Dodge Vipers were beautifully on display, and a behind-the-scenes brewery party with tastings and pairings, to name only a few. When all parties were completed and sponsorships collected, the event had raised more than \$300,000! Every dollar will benefit the Women's Board designated project, eight Pediatric ER Exam Rooms at CHRISTUS Mother Frances Hospital - Tyler, which will greatly improve the lives of the children of Northeast Texas.

A note of thanks from our inspiring 2018 Chair, Annalisa Stenklyft

I am so very grateful for the blessings we have received from a very generous Northeast Texas community.

A toast to our gracious party hosts, without whom this success would not have been achieved. We are so very grateful to you for opening your homes and your hearts and making T2ET a huge success for the third year.

A toast to our generous sponsors! You made our dream of dedicated Pediatric ER Exam Rooms a reality for our youngest patients.

A toast to all who participated in the events! You sponsored, you brought friends, you encouraged others to participate and supported us through this annual endeavor. The parties were so much fun because you showed up and made them so. We cannot fully express how much we appreciate you all.

We are already hard at work determining our next worthy project and planning the 2019 events. Our 2019 dedicated leader will be Jennifer Walsh! Stay tuned!

Gratefully,
Annalisa Stenklyft
2018 Chair, A Toast to East Texas





Miracle miles

5th annual Tyler Rose City Miracle Run

They were running with their children. They were walking with their neighbors. They were strolling with other moms and babies. Whatever the pace, every participant at the chip-timed 5K Tyler Rose City Miracle Run was there for the same reason – to help make miracles happen in the lives of the children of Northeast Texas. 2018 Miracle Child Jack Bryans started the dog-friendly race, with runners and walkers of all ages taking off to enjoy beautiful Rose Rudman Trail. There were lots of smiles as participants crossed the finish line knowing that they were helping to bring health, healing and hope to the children in our ministry, raising a grand total of \$40,203.

The programs of Children's Miracle Network Hospitals support vital pediatric services provided by CHRISTUS Trinity Mother Frances Health System. In addition to funding the purchase of specialized equipment, CMNH funds pediatric programs and education to equip caregivers with the knowledge and resources needed to deliver the best possible care for the children in our community.

Thank you to our sponsors, many of whom had runners participate!

Akin Farms
Apple Homecare
KYTX - CBS19
Central Title Company
Cooperative Teachers Credit Union
Dakotas - Steve Hellmuth & Linda Rudd
Flight For Life
Hembree Chiropractic
Kelly Community Credit Union
Mix 93.1 - Lucky Larry & Mandee Montana
Neighbors ER
Old Chicago
Orangetheory Fitness
The Junior League of Tyler, Inc.
Smoothie King
United Heritage Credit Union
Whitehouse Dentistry
WRL General Contractors





A time to celebrate

2nd annual Children's Miracle Network Hospitals Celebration

On Saturday, June 2, a group of Miracle Makers gathered to celebrate another record-breaking year for those working to raise money on behalf of Children's Miracle Network Hospitals. Kornpop the Klown was in full swing, making inventive balloon hats and animals for the crowd, as they enjoyed refreshments from Chick-fil-A and Dairy Queen of East Texas. Miracle Children, their families in tow, visited the elaborate candy bar and played games. The hit of the second annual event was the Extra Life video game set up, run by former Miracle Child Jeffrey Wright. A chorus line of children flipped their individual cards on cue to reveal the total: \$1,269,764 raised for the children of Northeast Texas, making 2018 a banner year!



YOU are making a difference

2018 Nursing Scholarships Awarded



CHRISTUS Trinity Mother Frances Health System is pleased to announce Amber Owens, RN, as the recipient of the **2018 Connie Mead Nursing Scholarship**, and the third recipient of the award. Amber is an innovator, developing cost-saving plans and an afterhours nurseline. She is a strong mentor for other Associates. Amber was recently accepted into the Master of Science in Nursing Education Program at Western Governors University. Thank you, Connie and Richard Mead, for championing excellence in nursing through your generous support.



We are happy to announce the founding of the **Share the Spirit Nursing Education Fund Scholarship** for Associates of CHRISTUS Trinity Mother Frances Health System who wish to further their nursing career. The first recipient, Jason Lee, BSN, RN, discovered that the field of nursing informatics provided a way for him to utilize technology to increase quality and standardize efficiency. He has presented at several national conferences and has been accepted into the Master of Nursing Informatics Program at Walden University.



CHRISTUS Trinity Mother Frances Foundation is pleased to present the 2018 recipient of the **Lurlene Shepherd Scholarship for Nursing Education**, Chelsie Warren, LVN, who will now pursue her BSN at Houston Baptist University. Those in her department agree that her initiative to make a difference will take her far in her nursing career. Thank you to our partner, James R. Shepherd, III, MD, for his commitment to furthering the education of passionate and dedicated nurses like Chelsie Warren.



Sister Feliciana Ziemba, beloved member of The Sisters of the Holy Family of Nazareth, served as the coordinator of the Mother Frances Hospital Pacemaker Clinic and ran the first Cardiac Critical Care Unit at Mother Frances. Her colleagues honored her with the creation of the **Sister Feliciana Nursing Education Scholarship Fund**. This year's inaugural scholarship recipient, Isaac Espinoza, always goes above and beyond his duties, serving in many positions within his unit. Isaac has been accepted into the Tyler Junior College nursing degree program and will graduate in 2020.

The Foundation wishes to thank the members of the 2018 Nursing Scholarship Committee: Denise Sorrells, Chair; Natalie Duncan, Karen Pollard, Ginger Spaude, and Pat Spears for their time and discernment in reviewing the 2018 candidates.

IT'S HIP TO BE SQUARE

CHRISTUS Trinity Mother Frances Foundation, in the Regions Bank building on the square in Downtown Tyler, continued its series of Texas artist installations with two important exhibits in 2018. The Foundation would like to thank Robert Langham III, artist, photographer and curator of our wonderful exhibitions.

Rosemary Nichols Swann

The beautiful paintings of artist **Rosemary Nichols Swann** were showcased during a lunchtime open house on Friday, February 16.

info@rosemaryswann.com



Koi Pond Rain



El Gallo Giro con Rosas

Holly Izard

An Artist Open House for the nature-inspired works of **Holly Izard** was held on Monday, July 30.

hollyizard.com



Rustscape



Ammonite



Grateful hearts

It means a lot to CHRISTUS Trinity Mother Frances Health System when someone has such a positive experience that they take the time to tell us about it. Such was the case of Grateful Patient **Bob Faulkner** of Tyler. He and his daughters were impressed by the kindness and professionalism they experienced while he was at CHRISTUS Mother Frances Hospital - Tyler. The family wanted to express their gratitude in a tangible way.

"We are so grateful to have had such a wonderful local hospital that gave Dad excellent care," said daughter Karen Key.

The Faulkner family's transformational gift will continue to impact our community for good.

We share these Grateful Patient stories with you so that you can be proud of supporting CHRISTUS Trinity Mother Frances and know that your donation truly does make a difference. Gifts from Grateful Patients help CHRISTUS Trinity Mother Frances achieve its mission of improving the health of our community, while also honoring the medical team that provides remarkable care.

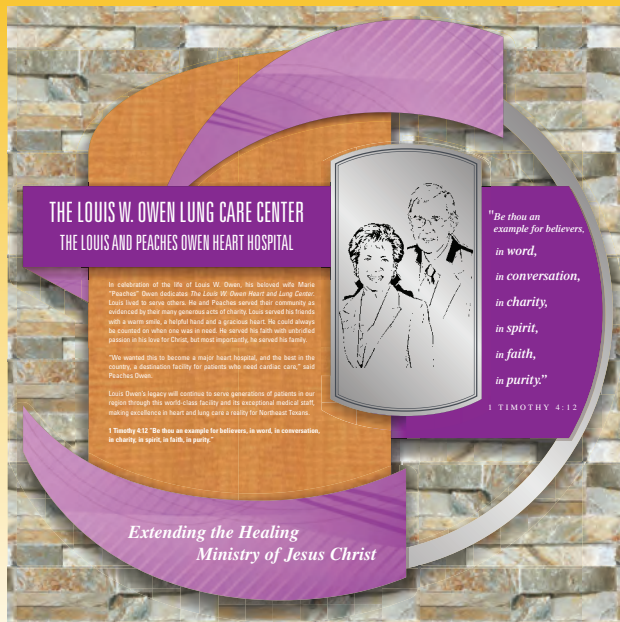
Please visit our website christustmffoundation.org for more information on ways to give.

"In the same way, let your light shine before others, so that they may see your good works and give glory to your Father who is in heaven."

Matthew 5:16



Bob Faulkner with daughters Karen Key and Buffie Kirwan



Two Foundation champions continue to leave a legacy

Pulmonary patients in Northeast Texas will breathe a little easier thanks to the generosity of two Foundation champions. Mrs. Peaches Owen and Mrs. Elizabeth Sutton were honored in a ceremony on the sixth floor of the Louis and Peaches Owen Heart Hospital for their continued philanthropic commitment benefiting the cardioly programs of CHRISTUS Mother Frances Hospital - Tyler.

In celebration of the life of Louis W. Owen, his wife Marie "Peaches" Owen dedicated **The Louis W. Owen Lung Care Center**. The creation of the Louis and Peaches Owen Heart Hospital ushered in a new era in heart care, incorporating the latest technologies and processes with healing concepts and patient-centered features. This new addition, housed on the sixth floor of the Heart Hospital, is designed to help patients who struggle with chronic lung disease.

"Patients who come from all over Northeast Texas with every conceivable lung condition can expect the latest advances in prevention, diagnosis and treatment at the Louis W. Owen Lung Care Center," said Deb Chelette, Associate Vice President of Cardiovascular Services. "Our goal is to deliver

extraordinary care for any lung condition – from asthma, to cystic fibrosis, to rare lung cancers. Louis Owen's powerful legacy of giving will continue to serve generations of patients in our region through this world-class facility."

The Sutton Waiting Room in the Lung Care Center, dedicated by Elizabeth Sutton, will provide a quiet location for family and friends of patients to recharge, rest or read while waiting on patient updates. With more than 35 million Americans living with a chronic lung disease, the growing demand for pulmonary services would not have been met without generous and caring people like the Suttons.

Chris Glenney, Chief Executive Officer of CHRISTUS Health Northeast Texas remarked, "The impact these families have made over the years is immense. These gifts will help generations of patients live longer and enjoy a better quality of life."

We at CHRISTUS Trinity Mother Frances Foundation are grateful for the Owen and Sutton families. The have truly been our partners, and we cherish their *spirit of giving*.



Dr. Steve Keuer, Joseph Z. Ornelas, Louise Ornelas, Lucy Carr, John Carr and Chris Glenney



Dr. Brenda Morris explains the expansion plan to the nursing team.

HOPE starts HERE

Neonatal Intensive Care Unit Expands to Care for our Tiniest Patients

On March 1, CHRISTUS Trinity Mother Frances Health System announced the plan to expand the Level III Neonatal Intensive Care Unit at CHRISTUS Mother Frances Hospital – Tyler.

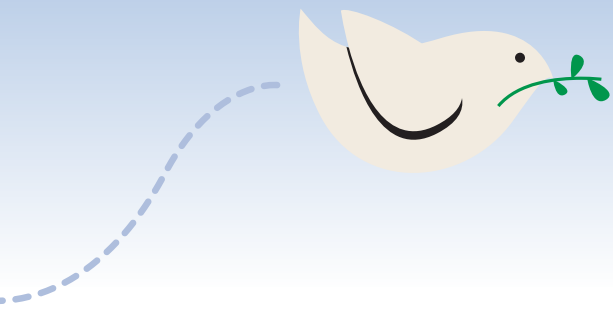
To be completed in phases, this project will increase the current capacity of the Neonatal Intensive Care Unit by expanding the NICU footprint to include:

- 28 licensed private rooms
- Four semi-private rooms that can accommodate twins
- State-of-the-art equipment
- Expanded well-baby nursery
- Lactation suite
- A transition room for families preparing to go home
- Streamlined access from the L & D to the NICU
- Other amenities to include a spacious family-friendly waiting area

The current NICU is the only Level III facility in Smith County, and is often at capacity with tiny miracles requiring specialized treatment. More than 450 of the 2900 babies born at CHRISTUS Mother Frances Hospital every year are placed in the NICU.

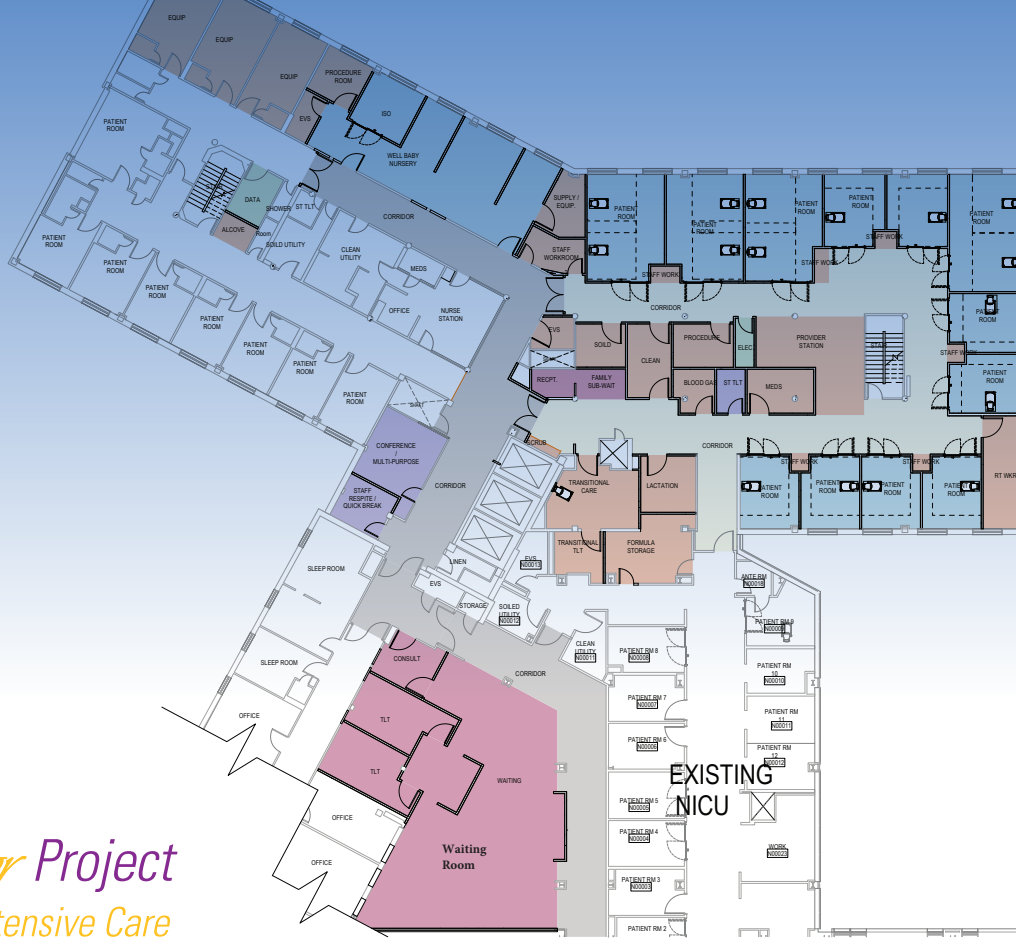
“With the expertise of our Medical Director, Dr. Brenda Morris, we are expanding the current area to create a state-of-the-art, best-practice facility that will increase our capability to care for those born too sick or too soon,” said Chris Glenney, CEO of CHRISTUS Health Northeast Texas and Trinity Mother Frances Health System.

CHRISTUS Mother Frances Hospital has a history of going above and beyond to care for our community’s children. From opening our doors one day early in 1937 to care for students and families affected by the New London School explosion, to this project, which will increase our ability to care for babies here in Tyler.



The Yellow Door Project

Transforming Neonatal Intensive Care
in Northeast Texas



Two families have stepped up to launch The Yellow Door Project in a significant way. They have made an investment that will affect many tiny lives in the community where they live.

"We are so fortunate to live in a community where generous donors share our vision and our mission," said Robin Rowan, Executive Director of the CHRISTUS Trinity Mother Frances Foundation.

Lucy and John Carr truly have a heart for children and have blessed us through their generous support of the NICU expansion. Their substantial donation will allow us to minister to the infants and their families who need extra special care. We can't thank them enough for joining us in this mission.

Louise and Joseph Z. Ornelas, our long-time supporters, continue to support the tradition of excellence that has been established at CHRISTUS Mother Frances Hospital. They treasure children and have a heart for mothers, and they continue their heartfelt commitment and dedication to their

neighbors in Northeast Texas with their significant gift. We are so very grateful that they are our partners.

With their generous donations, these Friends of the Foundation will enable our ministry to touch the lives of countless children across generations, and we are thankful.

This 9.9 million dollar project will rely heavily on the philanthropic support of the community. We call upon you, the people of Northeast Texas, on behalf of your family, friends and neighbors, to follow the lead of these Foundation Champions - with philanthropic contributions large or small.

Your funding of this effort will give the newborns who struggle hope for a bright, promising future.

The Yellow Door Project is the 2019 designated fundraising project of the Foundation Women's Board. Please prayerfully consider supporting this ministry. **For more information or to make a contribution, please contact the CHRISTUS Trinity Mother Frances Foundation at 903.606.4752 or online at christustmf.org/donate**

A TOAST to the Community

Dedicated ER Pediatric Exam Rooms Will Bless the Children of Northeast Texas

The Foundation Women's Board and CHRISTUS Trinity Mother Frances Health System shared a vision of having dedicated ER pediatric exam rooms for the children who are brought to the Emergency Care Center at CHRISTUS Mother Frances Hospital - Tyler. We are thrilled to announce that this dream will be a reality by the fall of 2019. Injured and sick children will have **eight dedicated ER examination rooms**, in addition to the already-funded ER pediatric waiting room, thanks to the determined efforts of the Women's Board, and the many generous supporters of A Toast to East Texas 2018.

Each of the eight rooms will feature:

- A different soothing mural
- A multi-sensory station
- Child-sized equipment, gowns, IVs, airway management tools and other medical necessities designed just for children
- Relaxing LED lighting with dimmer switches
- Televisions with children's channels available
- Staff with special training in age-appropriate care that factors in the child's physical, social and emotional development
- A licensed Child Life Specialist, a family advocate, a social worker and interpreter services will offer comprehensive, patient and family-centered care

This project completes the two-year pledge by the Foundation Women's Board to focus their fundraising efforts on creating dedicated pediatric areas in the new Emergency Care Center housed on the first floor of the six-story Bradley-Thompson Tower.



The Red Door Project
Transforming Emergency Care
in Northeast Texas





CHRISTUS TRINITY MOTHER FRANCES
Foundation

2018
Annual
Report

Transformational Giving

22

Vantage Point

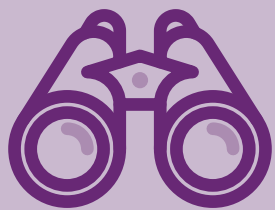
Randall Childress
Chair of the Foundation
Board of Directors

23

Financial Statement

24

Friends of the Foundation Gift Report



**Vantage
POINT**



An intentional giving makeover

Most of us carefully plan our personal financial investments, yet many people do not have a strategic plan for giving money to help build the Kingdom of God. What if we gave ourselves an "intentional giving makeover"? What if we all reserved a percentage of money monthly and put it into a Blessing Fund, and then were thoughtful about how we spent it annually to make a transformational difference?

The Bible suggests that we be intentional with our giving. 2 Corinthians 9:7 says, "Each of you should give what you have decided in your heart to give, not reluctantly or under compulsion, for God loves a cheerful giver." And nobody loves to give more than God. From the beauty of a sunrise, to the serenity of the stars at night, to the dramatic, awe-inspiring, frozen landscapes of Iceland, God is the giver of every good gift.

When you have a Blessing Fund, you are kind of like a venture-capitalist investing in human well-being; you look for problems that only you can solve, then you apply your fund to those problems. It changes your perspective from "someone should do something about that" to, "what can I do to help?" This is the power of intentional giving.

Now, I know that I might be "preaching to the choir." As my fellow supporters of CHRISTUS Trinity Mother Frances Health System, you all have given from your heart on a regular basis, and for this we are truly grateful. You are using your personal Blessing Funds to improve someone else's life by supporting the projects of our health system, cheerfully. Enjoy the feeling. Repeat. It's that simple. Now go and transform the world, one intentional gift at a time.

Randall V. Childress, Chairman
CHRISTUS Trinity Mother Frances Foundation
Board of Directors

2018 – 2019 Board of Directors CHRISTUS Trinity Mother Frances Foundation

Dennis Box

Thomas J. Brown

James A. Caccitolo, MD

Randall V. Childress

John Gaston

Terry Giles

Chris Glenney

Marilyn Hardy

Steve Hellmuth

Steve Keuer, MD*

Michael Mahfood

Sister Malgorzata Majszczyk

Brian McCabe

Andy Navarro*

Laura Redman

Linda Rowe

Scott Smith, MD*

Jerry Spencer

Bishop Joseph E. Strickland

Patrick R. Thomas, MD **

Clayton Whitney, MD

John P. Williams, Chair

*Ex-Officio

**Emeritus

Financial statement 7.1.17 – 6.30.18

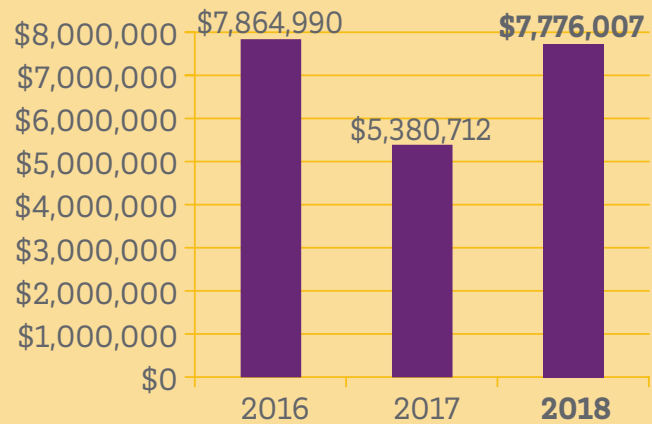
Summary of gift support for CHRISTUS Trinity Mother Frances Foundation

This number reflects total gifts and pledges.



2018 TOTAL: \$7,776,007

Past total gift report



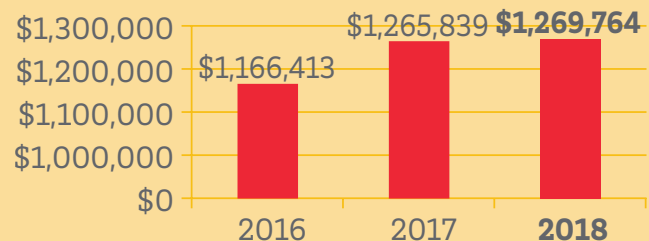
CHRISTUS Trinity Mother Frances Associates "Share the Spirit" Annual Campaign

The Associate Share the Spirit graph demonstrates the impact of care being provided by Associates, caregivers and physicians who donate to the CHRISTUS Trinity Mother Frances Foundation. These funds are restricted for projects, equipment and services designed to benefit the patients of CHRISTUS Trinity Mother Frances Health System.



Children's Miracle Network Hospitals Support

This graph reflects the growth in giving to Children's Miracle Network Hospitals since 2016. These totals include all donations for CMNH from national sponsors, local sponsors, individuals and businesses. This growth has been, and will continue to be, a vital part of CHRISTUS Trinity Mother Frances Health System's success in providing the highest level of care for our smallest patients.



CHRISTUS Trinity Mother Frances Friends of the Foundation gift report

We are pleased to take this opportunity to thank and recognize our generous supporters. You have made an enduring impact on health care in Northeast Texas this year. Thank you to the individuals, foundations and corporations who have made gifts from July 1, 2017 through June 30, 2018. Every effort has been made to ensure that this list is as complete and accurate as possible, but inevitably some errors or omissions may have occurred.

We appreciate receiving corrections, comments or questions. Please contact the CHRISTUS Trinity Mother Frances Foundation office at 903.606.4752.

**“The more we abide in Christ,
the more His grace and power
transform us into His image.”**

Lailah Gifty Akita



Foundation HONORS 7.1.17 – 6.30.18

- Dee Anne Adams
Mr. Wayne Mitchell
Julie P. Adams, FNP-C
Anonymous
Dr. Neil H. Adelman
Mrs. Patricia A. Woolard
Thelma Anders
Anonymous
Dr. Duane N. Andrews
Anonymous
Col. and Mrs. John O. Childs
Don G. Evans
Mr. and Mrs. John V. Lakey
Mr. Burton Tingle
Dr. Luis Arce
Mr. and Mrs. Michael Victor
Sister Irene Asztemborska
Mr. and Mrs. Jeff G. Hyde
Misty L. Baggett
Mr. John R. Driver
Sharie Bailey
Ms. Julian G. Campos
Dr. John Barnett
Mr. Robert Gee
Dr. Myrtha E. Basile
Anonymous
Dr. David H. Beard
Mr. C. Dewayne Bethea
Mrs. Consuelo M. Martinez
Mr. Roy D. Owens
Mrs. Joyce R. Scott
Dr. Charles V. Beall
Anonymous
Mr. William Groce
Mr. and Mrs. Gary Wideman
Dr. Russell Bell
Mr. Arthur J. Halliday
Ms. Joyce A. Story
Michelle Bentoski
Mr. Tommie L. Helm
Dr. Andrew Berkson
Anonymous
Mr. and Mrs. James D. Wilcox
Dr. Eric Bilby
Mr. and Mrs. Joe Vann
Lindsey Bradley
Mr. and Mrs. Glen T. Hamilton
Allison, Jonathan, Avery and
Emma Tuseth
Dr. Melita L. Brooks
Anonymous
Mr. John R. Driver
Ms. Paula Gentry
Jeri L. Brown, FNP-C
Anonymous
- Dr. Sheryl Busch
Mr. and Mrs. Wayne Burchfield
Dr. James A. Caccitolo
Ms. Lane J. Barnett
Dr. Andria Cardinali-Stein
Mr. and Mrs. Paul Bauereis
Ms. LaVonn Higgs
Mr. and Mrs. Michael Victor
Ms. Lou Ann Wester
Dr. Stephanie H. Carl
Mr. and Mrs. Johnny Walker
Dr. David J. Carney
Drs. Samuel and Edna Houston
Dr. Jeffrey G. Carr
Mrs. Shirley H. Guillory
Mr. Daniel L. Rodell
Dr. Billy Dan Carson
Anonymous
Mr. and Mrs. Nolan L. Green
Mr. Tommie L. Helm
Mr. and Mrs. Frank A. Oden
Dr. Hector Ceccoli
Anonymous
Dr. Nirmala Cheatham
Mr. James O. Moses
Robert Clarke, PA-C
Mr. Burton Tingle
Dr. Jon-Michael G. Cline
Mr. and Mrs. Richard C. Davis
Dr. Steven J. Cohen
Anonymous
Mr. and Mrs. John Overstreet, Jr.
Mr. and Mrs. Mike Rowan
Ms. Lou Ann Wester
Mr. William D. Wilson
Dr. Douglas C. Coltman
Anonymous
Mrs. Daisy H. Barger
Mr. and Mrs. Paul Bauereis
Mr. and Mrs. David H. Carter
Ms. Wanda M. Jett
Mr. and Mrs. Joe J. Jones
Mrs. Royce L. Lanier
Dr. Lynda O. and Mr. David Speak
Mr. and Mrs. James D. Wilcox
Mr. William D. Wilson
Mrs. Janice L. Wisner
Dr. Pochin and Mr. Sheng Yin
Deysi Cornelio
Mr. and Mrs. Joe Vann
Dr. Leslie A. Couch
Ms. Sarah L. Cooper
Dr. J. Stuart Crutchfield
Anonymous
Mr. and Mrs. James D. Wilcox
- Dr. Kenneth D. Cushman
Ms. Sarah L. Cooper
Mr. and Mrs. Guy Goodwin
Ms. Patsy G. Tyner
Dr. J. Leonard DeCarlo
Mr. Robert Gee
Michael W. Deeds, PA-C
Mr. Aubrey D. Ingram
Dr. Rachel L. Devaney
Mrs. Arlene L. Bergner
Dr. Charles T. Dickson
Mr. George T. Tidmore
Dr. James D. Dopson, Jr.
Mr. and Mrs. Jim B. Brown
Dr. Emily Dosier
Ms. Mary E. Rollins
Melinda Dunn
Anonymous
Dr. Shawn Dunn
Mr. Richard Magner
Dr. H. Katrina Duplechain
Mr. Charles Couser
Ms. Ladene B. Dugger
Mr. and Mrs. Robert Marchell
Mr. William D. Wilson
Dr. G. Aaron DuVall
Mr. and Mrs. John V. Lakey
Dr. Terri L. Eckert
Mr. and Mrs. Charles Morgan
Dr. Thomas F. Eckert
Ms. Jacqueline K. Kerlin
Lindsey Edwards, FNP
Mr. and Mrs. Gary Wideman
Dr. Alan Eli
Anonymous
Mr. and Mrs. Robert A. Crosson
Mr. and Mrs. Randy K. Durossette
Ms. Judy C. Feigal
Mr. and Mrs. Robert J. Strong
Dr. Andrea M. Ellis
Mr. and Mrs. Robert L.
Holsomback
Mr. and Mrs. Ralph W. Stewart
Dr. Robert Ellis
Anonymous
Dr. Grace C. English
Ms. Judith D. Elliott
Ms. Molly Hickman
Dr. Neda Esfandiari
Mr. George L. Reasoner
Dr. Estrada
Anonymous
Dr. Evan M. Evans
Mr. and Mrs. Melvin Jenschke
Joellen Eysnogle
Anonymous
- Dr. Paul M. Fanning
Ms. Linda M. Nichols
Dr. Marina Y. Flaskas
Mr. C. Dewayne Bethea
Mr. and Mrs. Wayne Burchfield
Mr. and Mrs. Charles J. Taylor
Mr. and Mrs. James D. Wilcox
Dr. David K. Fletcher
Mr. Spencer C. Miller
Dr. Roel O. Flores
Mr. and Mrs. John Reynolds
Dr. Robert W. Frederick
Anonymous
Mr. Joseph A. Capps
Mr. and Mrs. James D. Wilcox
Dr. Sheldon Freeberg
Anonymous
Ms. Christine P. Birdwell
Ms. Joy B. Cariker
Mr. Melvin R. Nutt
Dr. L. Don Freeman
Anonymous
Mrs. Martha G. Humphries
Dr. Ashish Gangasani
Ms. Lou A. Westhoff
Dr. G. David Gass
Ms. Bertha Tapley Lowe
Bonnie Gilmer
Mr. and Mrs. Coy C. Johnson
Dr. Jason Gipson
Anonymous
Marcia Green, FNP
Anonymous
Dr. Thomas F. Gregory
Karen Faulkner Key Donor
Advised Fund at Texas
Communities Foundation
Mrs. Martha G. Humphries
Mr. Roy D. Owens
Dr. Kyle L. Gully
Anonymous
Ms. Linda Gonzalez
Mrs. Claudine L. York
Michael Hall
Mr. and Mrs. Bruce E. Hall
Dr. W. Bruce Harrell
Mr. Gary Cochran
Mr. and Mrs. Floyd R. McCown
Mr. William D. Wilson
Dr. Preston E. Harrison
Mr. Robert A. Erwin
Nan Hatten
Ms. Barbara A. Shamblin
Dr. David A. Hector
Mr. Leroy Francis

Foundation HONORS 7.1.17 – 6.30.18

Dr. Steven J. Helf
 Anonymous
 Mr. and Mrs. Ed A. Thoes
 Mr. and Mrs. Gary Wideman
 Dr. Timothy Holcomb
 Mr. and Mrs. Robert A. Crosson
 Dr. Jonathan C. Hosch
 Mr. Uquhardt Gipson
 Mr. and Mrs. Doyle W. Johnson
 Mrs. Consuelo M. Martinez
 Dr. Han Hulén
 Anonymous
 Dr. Stephen A. Hutto
 Ms. Patricia E. Young
 Dr. Julia D. Hwang
 Mr. and Mrs. Richard M. Carroll
 Mrs. M. Suzanne Harrison
 Mr. Jerial A. Knight
 Mr. and Mrs. Anthony M. Martin
 Dr. and Mrs. William H. Starling
 Mr. and Mrs. Michael Victor
 Stephanie A. Hyde
 Anonymous
 Mr. and Mrs. Joey Braly
 Mr. and Mrs. Scott Fossey
 Mr. Aubrey Harry
 Ms. Casey Perkins
 Mr. Jamie B. Ward
 Dr. Sherif S. Iskander
 Mr. Joseph A. Capps
 Dr. C. Noah Israel
 Ms. Louise Clarkston
 Dr. Jennifer Jenkins
 Anonymous
 Dr. Carolyn Jenks
 Ms. Patsy Fielding
 Virginia Jones
 Mr. J. M. Jones
 Dr. George W. Kariampuzha
 Mr. and Mrs. Paul Bauereis
 Mrs. Pat Camron
 Mr. and Mrs. Randy K. Durossette
 Reverend John F. Flynn
 Mr. and Mrs. Ralph W. Stewart
 Dr. Sylvia A. Kariampuzha
 Anonymous
 Mr. Uquhardt Gipson
 Mr. William Groce
 Mr. and Mrs. Donald L. Reid
 Dr. Janet R. Keais
 Mr. and Mrs. Robert Marchell
 Dr. Racheal Keilin
 Mr. and Mrs. Joe Vann
 Dr. Steven P. Keuer
 Anonymous
 Ms. Christine P. Birdwell
 Mrs. Dorothy Clark
 Ms. Linda T. Moody
 Mrs. Joan Price
 Mrs. Marilyn L. Richey
 Mr. and Mrs. Curtis Stout
 Mr. Burton Tingle
 Dianna L. Kidwell
 Mr. George White
 Dr. Andrew K. Kirkpatrick
 Mr. and Mrs. Wayne Burchfield
 Mr. and Mrs. James H. Cromwell
 Mr. Arthur J. Halliday
 Mr. Clyde M. Mills
 Mr. Roy D. Owens
 Mr. and Mrs. Donald L. Reid
 Dr. Donald Knarr
 Mr. Spencer C. Miller
 Mansata Kora
 Mr. and Mrs. Joe Vann
 Sister Sylvia Kubiak
 Mr. and Mrs. Randall J. Robinson
 Dr. Aparna R. Kumar
 Ms. Ann C. Wallace
 Dr. Kenneth B. Kummerfeld
 Mrs. Joanna G. Baldwin
 Mr. and Mrs. Robert L. Holsomback
 Ms. Mary Huffman
 Mr. James O. Moses
 Mr. and Mrs. Richard A. Pinto
 Ms. Janelle D. Sitton
 Dr. John A. Larrinaga
 Anonymous
 Dr. Arielle S. Lee
 Mr. and Mrs. Robert N. Bergfeld, Sr.
 Mr. and Mrs. James H. Cromwell
 Dr. Sauyu Lin
 Mr. Charles Couser
 Mr. and Mrs. Wilford V. Gabbard
 Dr. James A. Lively
 Mr. and Mrs. Richard M. Carroll
 Mr. Robert A. Erwin
 Mrs. Jane C. Neff
 Dr. Bryan M. Lowery
 Mr. Daniel L. Rodell
 Dr. Richard W. Lowry, Jr.
 Ms. Charis Singleton
 Dr. Ming Lu
 Anonymous
 Ms. Christine P. Birdwell
 Mr. Albert Erwin
 Mr. Roger McLaughlin
 Dr. Heather Macbeth-Estrada
 Mr. William Groce
 Dr. Joseph M. Martellotto
 Ms. Judith D. Elliott
 Mr. and Mrs. John Reynolds
 Dr. James D. McAndrew
 Drs. Samuel and Edna Houston
 Mr. and Mrs. David B. Ireland
 Dr. Roger L. McCown II
 Mr. Arthur J. Halliday
 Mr. and Mrs. James D. Wilcox
 Cheryl Poole McKay
 Mr. Hiram Watson
 Dr. Robert A. McKinney, Jr.
 Mr. and Mrs. Joe J. Jones
 Dr. Tynus W. McNeel, Jr.
 Mr. and Mrs. David B. Ireland
 Dr. Chad McNeil
 Anonymous
 Belinda Mitchell
 Mr. Wayne Mitchell
 Jamie Moore
 Mr. and Mrs. Scott Chelette
 Phyllis Moss
 Anonymous
 Patty Myers
 Anonymous
 Dr. Kenneth Nixon
 Anonymous
 Ms. Marchita Bodin
 Dr. Kevin A. Nixon
 Mrs. Martha G. Humphries
 Dr. P. Daniel Obesso
 Mr. and Mrs. Freddie L. Geese
 Ms. Joyce A. Story
 Dr. Lloyd M. Olsen
 Anonymous
 Mr. and Mrs. Doyle W. Johnson
 Mr. and Mrs. Robert H. Pettit
 Mr. and Mrs. Robert W. Wyman
 Dr. Troy D. Overbeek
 Anonymous
 Ms. Nadine Van Laecken
 Dr. Kimberly Page, FNP
 Mr. Robert C. Thompson
 Mary Jo Palacek, FNP-C
 Mr. and Mrs. Roger S. Strain
 Dr. Oscar A. Paniagua
 Ms. Betty J. Boyd
 Reverend John F. Flynn
 Dr. D. Michael Park
 Mr. and Mrs. Oscar H. Finch
 Brandi Pate
 Dr. Jack D. Hollada, DC
 Dr. Jayesh K. Patel
 Mrs. Joyce R. Scott
 Dr. Charles M. Perricone
 Anonymous
 Mr. and Mrs. Johnny Walker
 Mr. Robert L. Wood
 Dr. Alexandre A. Petrakian
 Mr. Alvin E. Simek
 Dr. Jared B. Petty
 Ms. Amelia Davis
 Dr. W. F. Phillips
 Mr. and Mrs. Mark W. Stiles
 Mr. and Mrs. Darrell D. Wilson
 Dr. Peter Pitonak
 Anonymous
 Mr. James Dennis
 M. Sue Potter
 Mr. Danny Potter
 Cathy A. Powell
 Mrs. Joan Price
 Karie Price
 Mr. and Mrs. Gregory K. Warf
 Dr. Nandan K. Puvvada
 Mr. Stephen W. Cary
 Dr. Jane T. Ragland
 Mr. James Dennis
 Dr. Randy C. Randall
 Mr. Robert C. Vlasak
 Dr. Paul A. Rath
 Mrs. Joyce R. Scott
 Dr. James E. Repasky
 Mrs. Anelle Jones
 Dr. Donald A. Richards
 Mrs. Daisy H. Barger
 Barbara and Mark Leighton
 Dr. Lee H. Ridenour
 Anonymous
 Mr. and Mrs. John M. Ashby
 Mrs. Nancy Ireland
 Mr. Shelby L. Massey
 Mrs. Joan Price
 Mr. and Mrs. Curtis Stout
 Mrs. Charleen M. Walston
 Cathy Rogers
 Mr. Hiram F. Watson
 Linda K. Rowe
 Mr. and Mrs. Randall V. Childress
 Dr. Michael E. Russell II
 Mr. Michael B. McGinney
 Fe Santucci
 Mr. and Mrs. Donald Key
 Dr. C. Fagg Sanford
 Anonymous
 Ms. Lane J. Barnett
 Dr. and Mrs. Glen C. Dyer
 Mr. Robert Gee
 Mr. and Mrs. Gerald M. Hall
 Drs. Samuel and Edna Houston
 Ms. Bertha Tapley Lowe
 Mr. and Mrs. Robert H. Pettit
 Mr. and Mrs. Curtis Stout
 Dr. Mark W. Saunders
 Mr. Roy D. Owens
 Dr. Heidi E. Schneider
 Mr. and Mrs. Randy K. Durossette
 Ms. Jacqueline K. Kerlin
 Dr. Hans Schuricht
 Anonymous
 Mr. and Mrs. Wilford V. Gabbard
 Mrs. Janis M. Jeffrey
 Mr. Roy D. Owens
 Dr. Jerry W. Schwarzbach
 Mr. Michael B. McGinney
 Dr. John W. Scroggins
 Ms. H. Audrey Chartier
 Mr. and Mrs. Freddie L. Geese
 Mr. Loyd C. Massey
 Ms. Linda M. Nichols
 Mr. Hong-Kyu Park
 Mr. and Mrs. Arlon D. Scroggins
 Mr. and Mrs. James H. Sellers
 Mr. and Mrs. Bradley D. Stout
 Lisa Sestions
 Mr. Tommie L. Helm
 Dr. Jeffrey Shea
 Ms. Lane J. Barnett
 Dr. Amy K. Simpson
 Anonymous
 Sherry Simpson
 Mr. D. Timothy Simpson
 Dr. John B. Sims
 Anonymous
 Mr. and Mrs. Robert L. Holsomback
 Mrs. Consuelo M. Martinez
 Mr. Roy D. Owens
 Mr. George T. Tidmore
 Ms. Nadine Van Laecken
 Miranda Sims, FNP-C
 Mr. John R. Driver
 Dr. Peter A. Sirianni
 Mr. and Mrs. Anthony M. Martin
 Mr. and Mrs. Floyd R. McCown
 Paula Sledge
 Ms. Barbara Hale
 Dr. Alan Smith
 Mr. Stephen W. Cary
 Dr. Eric R. Smith
 Ms. Edwina S. Bulman
 Mr. Jerial A. Knight
 Reverend and Mrs. Donald F. Osada
 Mrs. Sue W. Raney
 Mr. and Mrs. Larry P. Simmons
 Mr. and Mrs. Charles J. Taylor
 Ms. Ann C. Wallace
 Mrs. Charlotte Wilson

Dr. Robert W. Smith
 Anonymous
 Mrs. Jane C. Neff
 Dr. Sally L. Smith
 Mr. and Mrs. Donald L. Reid
 Mr. and Mrs. Arlon D. Scroggins
 Dr. Todd P. Smith
 Mr. C. Dewayne Bethea
 Dr. Clinton C. Smithson III
 Karen Faulkner Key Donor
 Advised Fund at East Texas
 Communities Foundation
 Dr. Tanya Solis
 Anonymous
 Dr. Glen W. Sorrentino
 Anonymous
 Mrs. Janis M. Jeffrey
 Mrs. Minerva C. Robinson
 Vicki Stanfield
 Anonymous
 Dr. James N. Stanford
 Mr. Stuart E. Adams
 Anonymous
 Mr. and Mrs. Stephen F. Davis
 Mr. and Mrs. David B. Ireland
 Ms. Jean A. Morgan
 Mr. and Mrs. Robert Thompson
 Argie Stewart
 Ms. Barbara Keepers
 Jo Nell Strickler
 Ms. Nelleva M. Vining

Dr. C. Allen Stringer
 Barbara and Mark Leighton
 Aneysa G. Thedford
 Mr. and Mrs. William C. Hearron
 Dr. Patrick R. Thomas
 Ms. Carrie Brookshire
 The Honorable Sam G. Griffith
 Mr. and Mrs. John B. White
 Dr. David Thompson
 Anonymous
 Sonja Tiller, FNP
 Mr. and Mrs. Freddie L. Geese
 Dr. John Turner
 Ms. Carolyn Hill
 Mr. Daniel L. Rodell
 Dr. William F. Turner, Jr.
 Mr. and Mrs. James D. Wilcox
 Dr. Marc Usrey
 Mr. and Mrs. John V. Lakey
 Dr. Matthew A. Vierkant
 Mrs. Beverly J. Beranek
 Mr. Joseph A. Capps
 Mr. and Mrs. James H. Cromwell
 Mr. and Mrs. Earl Finley
 Mr. and Mrs. Walter Latner
 Mr. and Mrs. Floyd R. McCown
 Dr. Thomas B. Volatile
 Mr. and Mrs. Walter Latner
 Dr. Ronald F. Vrnak
 Mr. Michael B. McGinney

Dr. Svetislava J. Vukelja
 Anonymous
 Ms. Betty J. Boyd
 Dr. and Mrs. William H. Starling
 Dr. R. Brent Wadle
 Anonymous
 Mr. and Mrs. Wilford V. Gabbard
 Ms. Dremma K. Haywood
 Dr. Ellen S. Walraven
 Mr. and Mrs. Richard A. Pinto
 Amber B. Wallace
 Mr. and Mrs. Ben Y. March
 Tracie D. Watson
 Ms. K. K. Stephens
 Dr. Allen C. Wegener
 Anonymous
 Mr. and Mrs. Jim B. Brown
 Reverend John F. Flynn
 Mr. and Mrs. James D. Hamrick
 Dr. Stanislav Weiner
 Mr. James Dennis
 Mr. and Mrs. Gerald M. Hall
 Ms. Mary Huffman
 Mr. and Mrs. Charles Morgan
 Dr. Lilika A. White
 Mr. Alvin E. Simek
 Lillian White
 Ms. Sharon L. Favors
 Laura E. Whitfield, NP
 Anonymous
 Mr. Shelby L. Massey
 Mrs. Charleen M. Walston

Dr. Clayton E. Whitney
 Anonymous
 Mr. and Mrs. Robert N. Bergfeld, Sr.
 Ms. Betty J. Boyd
 Mr. and Mrs. Theodore McGee
 Ms. Jean A. Morgan
 Mr. George T. Tidmore
 Chris Williams, PA
 Mr. and Mrs. Robert N. Bergfeld, Sr.
 Dr. Jennifer R. Wilson
 Anonymous
 Mr. Gary Cochran
 Dr. O. Ray Wilson
 Anonymous
 Mrs. Joanna G. Baldwin
 Dr. Jack D. Hollada, DC
 Mr. Melvin R. Nutt
 Mr. Ronald G. Singley
 Dr. Patrick L. Wupperman
 Mr. and Mrs. Darrell D. Wilson
 Dr. Lori C. Wyatt
 Mr. Uquhardt Gipson
 Dr. Kai Xia
 Mr. and Mrs. Harold R. Denson
 Mr. Roy D. Owens
 Jeffrey B. Yarbrough, NP
 Ms. Linda Gonzalez
 Dr. Anne Zeorlin
 Ms. Charlsye L. Lee
 Mr. and Mrs. Theodore McGee
 Ms. Bonnie Trammel
 Mr. and Mrs. William J. Wyatt





**Foundation
MEMORIALS**



Foundation MEMORIALS 7.1.17 – 6.30.18

- Randall D. Alford
Mrs. M. H. Brown
Vicki K. Allred
Mr. John A. Allred
Glenn Bass
Mr. and Mrs. Wilburn L. Dudley
Patricia H. Bean
Mr. Kenneth L. Bean
Bascom Bentley
Ms. Ann Nassour
Peaches and Bruce Brookshire
Mrs. Kay Cannan
Mrs. Judy P. Clymer
Rosemary Brunner
Mr. and Mrs. Joe D. Huffaker
Martha E. Buenaventura
Mr. Narciso P. Buenaventura
Polly J. Campos
Ms. Julian G. Campos
Polly Carrington
Ms. Julian G. Campos
Richard Ewing Cartwright
Prothro, Wilhelm and
Company
J. D. Caughron
Ms. Diane Caughron
Alton Carl Chapman
Ms. F. Kay Chapman
Michael "Mike" Connor
Ms. Faith Durbin
Mr. and Mrs. Rob Jones
Ms. JoAnn W. Ledlow
Mr. and Mrs. Brent Montgomery
Mr. and Mrs. John R. Patane
Mr. and Mrs. William L. Shepard
Ms. Sharon A. Wehring
Ms. Linda A. Whitmeyer
Jenny Daley
Mr. Ray Blair
Valene Davenport
Barbara and Mark Leighton
Patsy Ruth Davis
Anonymous
Richmond Kendall Dorsey
Ms. Jill Bowman
Mrs. Mary Elizabeth Dorsey
Mr. and Mrs. L. Francis Kay
Mr. and Mrs. Don Lederman
Ms. Lisa Schoonover
Mr. and Mrs. John A. Streun
Arden M. Erickson
Mrs. Helen D. Erickson
Mary Espitia Etheridge
Mr. David R. Etheridge
- Barbara A. Eubanks
Mr. and Mrs. Tommy J. Eubanks
Beth Weatherall Faulkner
Mr. and Mrs. Donald Key
James D. Friddle
Mrs. Joyce C. Friddle
Esther Rathburn Glover
Mr. and Mrs. Larry B. Lykins
Leigh Anne Gorges
Mrs. Mary E. Jackson
Rosa M. Halerumal
Ms. Erin Acker
Ms. Annamari F. Dietrichson
Dr. and Mrs. James Dopson, Jr.
Mr. and Mrs. J. Chris Glenney
Dr. and Mrs. Steven P. Keuer
Mr. Matthew R. Link
Dr. Margaret R. Reitmeyer
Mr. and Mrs. Charles L. Sorrells
Mr. and Mrs. David R. Spears
Mrs. Loretta F. Swan
Ms. Kelly R. Weisinger
Dr. and Mrs. Clayton E. Whitney
Jewel L. Hammett
Mr. and Mrs. Leo M. Glover
Valerie K. Hardy
Mr. and Mrs. John C. Hardy
Helena Frances Hargrove
Mr. J. Chris Glenney
Dr. Steven Keuer
Mrs. Debbie Lambert
Mrs. Amanda Smith
Dr. Scott Smith
Mrs. Michelle Spencer
William A. Hicks
Mrs. M. H. Brown
Gary Vic Hill
Ms. Carroll Smith
Davis Hoffman-Roach
Anonymous
Sabrina Hsu
Ms. Laura E. Stolz
Edward Odean Hyde
Mr. and Mrs. Jeff G. Hyde
Doris Jean Jones
Billy R. Martin Insurance Agency
Ms. Lois Blankenship
Mr. and Mrs. Gary Bounds
Ms. Barbara Bowen
CBH Insurance Agency, Inc.
Ms. Kim L. Crisp
Linda and Byron Duncan
Mr. and Mrs. Dana Friestad
Mr. and Mrs. Robert Friestad
Mr. and Mrs. Charles Helm
- Mr. and Mrs. George J. Johnson
Mr. and Mrs. Kip Jones
Mr. and Mrs. Kenneth Olson
Ms. Julie A. Renner
Staff at Best Western PLUS
Southpark Inn & Suites
Mr. and Mrs. Donald Walker
Kathy J. Jones
Anonymous
Scott Jones
Mr. Jerry D. Jones
Linda Jordan
Mr. Royce E. Jordan
Ron Keeley
Mr. and Mrs. William Demott
Ms. Geraldine W. Edwards
Mrs. Gloria Guilfoyle
Caroline and Jim Howard
Ms. Paula Hughes
Mr. and Mrs. Clark Nash
Claude A. "Dick" King, Jr.
Mrs. Elizabeth J. King
Lana Klug
Mr. Michael Klug
Doug Lake
Marilyn Thompson and Family
Edna Mae (Pruifoy) Lewter
Anonymous
Oma Boyde Lykins
Mr. and Mrs. Larry B. Lykins
James D. Moore
Ms. Glenda Jones
R. H. Murff
Ms. Sue Murff
Kylene P. Nelson
Mr. Bruce W. Nelson
Lena Susan O'Barr
Mr. and Mrs. Billy J. O'Barr
Ramanbhai Patel
Roshneil Business Investments
Josefina Perez
Mr. Salomon Perez
Valerie Paige Sturrock Pfeiffer
Mr. and Mrs. Bob Sturrock
Lloyd M. Pollard
Anonymous
Judith Powers
Ms. Pamela H. Franzen
Milford G. "Bubba" and
Jimmie Lou Ray
Mr. Randy G. Ray
Nancy J. Raynes
Mr. and Mrs. Roger S. Strain
Mae E. and Floyd M. Riley
Ms. Bettie J. Waters
- Frank Roy
Mr. and Mrs. Jesse B. Ferrell
Ann H. Shoffner
Mr. Dan T. Shoffner
Ken Smith
Ms. Laura Smith
Martha Beryl Jones Smith
Ms. Melissa Giffin
Todd Stainback
Anonymous
Marty Taylor
Anonymous
Mary Dale Thomas
Mr. and Mrs. B. Tim Brookshire
Ms. Carrie Brookshire
Mrs. Maridel M. Rippy
Mr. and Mrs. John B. White
Ray Thompson
Mr. and Mrs. Michael G. Hines
Jerry Don Thurman
Mrs. Deborah L. Thurman
Doug Turner
Anonymous
Mildred Turney
Ms. Dolores M. Bryson
Paulvin E. Valendez
Mr. and Mrs. J. Chris Glenney
Dr. and Mrs. Steven Keuer
Dr. and Mrs. Scott Smith
Thelma and John Wallace
Mr. Milton Wallace
Bland Ward
Ms. Deborah K. Marshall
Mrs. Maude W. Marshall
Roy M. Waters
Ms. Bettie J. Waters
Rex N. White
Mrs. Gloria G. White
Watson W. Wise
Watson W. Wise Foundation



**Foundation
DONORS**

Foundation DONORS 7.1.17 – 6.30.18

A. D. Francis Endowment Fund
 A. E. Shull & Company
 Mr. James H. Abbott
 Abbie
 ACell, Inc.
 Ms. Erin Acker
 Mr. Autry Acrey
 Mr. Earl W. Adams
 Mr. and Mrs. James D. Adams Jr.
 Mr. and Mrs. John Q. Adams
 Mr. Jim Addington
 Ms. Betty Adkins
 Advanced Health Media
 Mr. and Mrs. John E. Albright, Jr.
 Ms. Nanka Albright
 Alcon
 Mr. and Mrs. Jim Alexander
 Ms. Peggy Alexander
 Alexion Pharm. Inc.
 Allegan
 Mr. A. W. Allen
 Mr. and Mrs. Bruce C. Allen
 Mr. Karl Allen
 Ms. Lisa M. Allen
 Mrs. Melba N. Allen
 Mr. Perry Allen
 Amgen USA
 Mrs. Nell K. Amos
 Mr. Bobby D. Anderson
 Mr. James R. Anderson
 Dr. and Mrs. Kenneth L. Anderson
 Anonymous
 Arbor Pharmaceuticals
 Mr. Allen Arend
 Ms. Betty Arnold
 Mr. and Mrs. James W. Arnold, Jr.
 Mr. and Mrs. Don L. Arnwine
 Mr. and Mrs. Fred J. Arrambidez
 Ms. Lorene Ashby
 Astellas Pharma US
 AstraZeneca Pharmaceuticals LP
 Mr. and Mrs. Frank Atkins, Jr.
 Austin Bank
 Mr. Travis Aven
 Mr. and Mrs. Ronald L. Averitte
 B Cot Property Management Inc.
 Ms. Polly M. Bailey
 Mr. Lewis G. Bain
 Mrs. Beverly G. Baker
 Mr. Kenneth Baker
 Mr. Larry Baker
 Bank of America Foundation
 Ms. Sheree Barclay
 Mr. William Barfield
 Ms. Lane J. Barnett

Mr. James Q. Bartlett
 Ms. Connie Barton
 Mr. Manfred E. Bartsch
 Mr. and Mrs. Charles A. Baskin
 Ms. Elyn E. Bass
 Mr. Johnny M. Bass, Jr.
 Mr. Paul Bass
 Mr. Billy Bates
 Mr. and Mrs. Trevor Bates
 Mr. and Mrs. Terry G. Bates
 Ms. Julie Battles
 Mr. and Mrs. Paul Bauereis
 Mr. Gaylon Baugh
 Mr. and Mrs. Elmer Baxter, Sr.
 Mr. and Mrs. T. J. Baynham, Jr.
 BD, Inc.
 Mr. and Mrs. Harold C. Beard
 Ms. Judith Beard
 Ms. Delores Beasley
 Ms. Sarah A. Beattie
 Mr. Lyle E. Becknell
 Mr. James Bellah
 Ms. Beulah B. Bennington
 Mr. Tommy Bennington
 Mr. and Mrs. Robert N. Bergfeld, Sr.
 Mr. C. Dewayne Bethea
 Mr. James Beverly
 Ms. Rosemary Biel
 Mr. and Mrs. Larry D. Bielak
 Mr. Alvin M. Black, Jr.
 BlackRock Financial
 Management, Inc./Merrill Lynch
 Ms. Linda Blake
 Mr. and Mrs. W. S. Blanton
 Mr. Ray Boatman
 Mr. Marvin D. Boatright
 Bob L. Herd Foundation
 Mr. Richard Bocz
 Ms. Geneva E. Boman
 Boston Scientific Corporation
 Willemke Bouma
 Mr. and Mrs. James H. Bowers
 Mr. and Mrs. Lindsey Bradley
 Mr. George E. Bradshaw
 Mr. and Mrs. Billy Braly
 Mr. and Mrs. Steve Bratteli
 Mr. and Mrs. Thomas E. Brazier
 Mr. and Mrs. Norwood M. Brenneke
 Mrs. Sonja L. Brewer
 Mr. and Mrs. Roy J. Brooks
 Ms. Nancy L. Brooks
 Mr. Ray O. Brooks
 Mr. and Mrs. B. Tim Brookshire
 Mrs. Carrie W. Brookshire
 Ms. Cecilia Brotton

Mr. Robert R. Brousseau
 Ms. Brenda Brown
 Ms. Donna F. Brown
 Mr. and Mrs. Jim B. Brown
 Mr. John H. Brown
 Dr. and Mrs. Jonathan Thomas Brown
 Ms. Rose K. Brown
 Mr. and Mrs. Mark Brown
 Mr. and Mrs. DeWayne Brown
 Mr. and Mrs. Travis Brown
 Mr. Warren Brown
 Brownsboro Varsity
 Cheerleaders Booster
 Mrs. Mary S. Brumby
 Ms. Marsha Buchheit
 Mr. Ray Bunch
 Mr. and Mrs. David L. Bundy
 Mr. and Mrs. Fred Bunker
 Mr. and Mrs. Wayne Burchfield
 Ms. Cathy Burgess
 Ms. Janice Burk
 Mr. and Mrs. Michael L. Burks
 Ms. Martha J. Burns
 Mr. Joe B. Burriss
 Ms. Carolyn Busby
 Ms. Florence Bussey
 Mr. and Mrs. John L. Button
 C R Bard
 Dr. and Mrs. James A. Caccitolo
 Ms. Elizabeth J. Cain
 Mr. and Mrs. Johnnie E. Calahan
 Ms. Joan M. Calcote
 Mr. Jackie Callicoatte
 Mr. and Mrs. Martin Cameron
 Mr. and Mrs. Steven J. Camp
 Ms. Margie P. Campos
 Mrs. Pat Camron
 Mr. and Mrs. Darrold Cannan, Jr.
 Mr. and Mrs. Alton J. Cannon
 Mrs. Karen S. Canter
 Ms. Billie Cape
 Mr. Jimmy C. Capel
 Mr. Joseph A. Capps
 Cardinal HealthEducation
 Cardiovascular Systems, Inc. (CSI)
 Ms. Sandra Carlin
 Mr. Melvin Carlton
 Mr. and Mrs. Matt Carpenter
 Ms. Beth B. Carr
 Reverend and Mrs. John P. Carr
 Mrs. Barbara Carrell
 Mr. and Mrs. Harley E. Carrell
 Mr. and Mrs. Otis Carroll
 Ms. Dorothy R. Carroll
 Mr. Mozell A. Carroll

Mr. Jerry L. Carson
 Mrs. Melba G. Carter
 Mr. Earl Carver
 Mr. and Mrs. Hugh C. Carver
 Ms. Barbara K. Caserta
 Ms. Cynthia R. Cash
 Dr. Krystal and Mr. Nicholas Castle
 Ms. Bonnie J. Cates
 Ms. Johnnie Cato
 Ms. Mary Cato-Denson
 Ms. Diane Caughron
 Dr. and Mrs. Stanton P. Champion
 Ms. F. Kay Chapman
 Mr. and Mrs. Darrell Chase
 Ms. Khom Chea
 Mr. and Mrs. Randall V. Childress
 Col. and Mrs. John O. Childs
 Choice Homecare
 CHRISTUS HealthDirect
 CHRISTUS Trinity Mother Frances
 Health System Volunteers
 Citizens 1st Bank
 Citizens National Bank
 Ms. Sharon L. Clague
 Clarence E. Moore Trust
 Mrs. Dorothy Clark
 Mr. and Mrs. James C. Clark
 Ms. Judy Clark
 Ms. Katherine I. Clark
 Mr. and Mrs. John Clark
 Ms. Wanda Clayton
 Mr. Hershel L. Clement
 Mr. George E. Clifton, Jr.
 Clovis Oncology, Inc.
 Mr. Robert Cluck
 Ms. Carolyn A. Clute
 Mr. Gary Cochran
 Mr. and Mrs. David Cockerham
 Ms. Virginia Cockerham
 Mr. and Mrs. Joe D. Coe
 Complete Nutrition
 Mr. and Mrs. Steve Conaway
 Mr. and Mrs. Randy J. Conder
 Mr. Doug Conn
 Ms. Jean Connell
 Ms. Mary J. Conway
 Ms. Barbara Cook
 Mr. Charles Cook
 Ms. Frances Cook
 Cook Medical
 Mrs. L. Anne Cooper
 Ms. Paulette Cooper
 Mr. and Mrs. W. Paul Cooper
 Mr. Donald Copeland
 Mr. Manuel F. Coria

Foundation DONORS 7.1.17 – 6.30.18

Mr. M. L. Cornett
 Mr. and Mrs. Ronnie D. Coston
 Mr. Charles Couser
 Mr. and Mrs. William W. Covington
 Mr. Bert Cox
 Mr. Dell W. Cox
 Ms. Mary Cox
 Mr. Larry R. Craig
 Ms. Margueritte J. Crawley
 Ms. Loretta Crosby
 Dr. and Mrs. J. Stuart Crutchfield
 Mr. and Mrs. Kenneth R. Cue
 Mr. Roy W. Culley
 Mr. and Mrs. John C. Cumming
 Ms. Diane Cunningham
 Msgt. Frederick A. Cunningham
 Mr. and Mrs. Merle J. Cunningham
 Mr. Earl Curry
 Mr. and Mrs. Robert C. Curtis
 Dr. and Mrs. Kenneth D. Cushman
 Mr. and Mrs. John Dacini
 Mr. and Mrs. Richard Daffron
 Drs. Dabasish and Meher Dasgupta
 Mr. Jim Daugherty
 Mrs. Sharon Davenport
 Ms. Sharan N. David
 Mr. James H. Davignon
 Mrs. Annie L. Davis
 Mr. Bobby D. Davis
 Mr. Carl B. Davis
 Mr. and Mrs. Jimmy A. Davis
 Mr. and Mrs. Darren Davis
 Mr. Edward D. Davis II
 Mr. and Mrs. Toby G. Davis
 Mr. and Mrs. Richard C. Davis
 Mr. Ronnie D. Davis
 Ms. Barbara Davis-Scott
 Ms. Frances Dawson
 Mr. and Mrs. Patrick Deen
 Mr. and Mrs. Gary Delaune
 Mr. and Mrs. Mike DeLong
 Mr. James Dennis
 Mr. Bert Dennison
 Mr. Charles Denson
 Mrs. Linda R. Denson
 Mr. and Mrs. Rodney Dent
 Dr. Rachel and Mr. Matthew DeVaney
 Ms. Yolande Dewonck
 Ms. Violeta S. Diaz
 Ms. Cynthia Dickey
 Ms. Susan Dickey
 Ms. Carol Dietz
 Mr. and Mrs. Ken Dietz
 Mr. and Mrs. William J. Dillon
 Estate of C. M. Haddad
 Ms. Joan Dorman
 Ms. Charlene V. Dossett
 Mr. Clyde A. Dowdle
 Mr. Rickey D. Downey
 Mr. and Mrs. George E. Drake
 Mr. and Mrs. Stephen R. Drake
 Mr. William T. Drozd
 Ms. Carol R. Drummet
 Mr. Edward A. Drummond
 Mr. and Mrs. John M. Duke
 Ms. Judith Dumas
 Reverend J. B. Dunlap
 Mr. Royce E. Dunlap
 Dr. and Mrs. Shawn Dunn
 Mr. J. W. Durham
 Mr. and Mrs. S. Ray Durham
 Mr. and Mrs. Randy K. Durossette
 Mr. Richard Dyer
 Mr. Joe C. Eakin
 Mr. and Mrs. David R. Earhart
 Ms. Louise W. Eberle
 Dr. D. M. Edwards
 Elkhart ISD
 Mr. and Mrs. Jim Ellis
 Mr. and Mrs. John L. Ellison II
 Epic
 Mr. Erik A. Eriksen
 Mr. Albert Erwin
 Mr. Robert A. Erwin
 Ms. Linda H. Eskew
 Mr. Jerry Estock
 Mr. Charles O. Etheridge
 Mr. David R. Etheridge
 Mr. and Mrs. Don G. Evans
 Ms. Karen Evans
 ExxonMobil Foundation
 Ms. Kay Fancher
 Mr. and Mrs. Robert Farmer
 Mr. William Farnham
 Ms. D. Earlene Farrell
 Mr. Larry Farrell
 Mr. and Mrs. Richard Farris
 Robert and Beth Faulkner Donor
 Advised Fund at East Texas
 Communities Foundation
 Ms. Charlotte Fauss
 Ms. Zaida E. Febles
 Ms. Betty Rose Ferrell
 Mr. and Mrs. Oran L. Ferrell III
 Ms. Carolyn Fields
 Mr. and Mrs. Oscar H. Finch
 Lt. General Howard M. Fish
 Mr. Olin D. Fisher
 Mr. David H. Fitzgerald
 Mr. Steven Flaherty
 Mr. and Mrs. Carroll H. Flanagan
 Mr. and Mrs. Doug E. Flatt
 Flint-Gresham Volunteer
 Fire Department
 Mrs. June S. Flock
 Ms. Cheryl A. Flood
 Mrs. Jane B. Ford
 Ms. Lillian A. Ford
 Mr. and Mrs. Scott Fossey
 Mrs. Linda C. Foster
 Ms. Tonya Foster
 Mr. Malvin Fowler
 Mr. Billy Fox
 Mr. Leroy Francis
 Ms. Mattie L. Franklin
 Ms. Pamela H. Franzen
 Ms. Janet Freeman
 Mr. Billy J. French
 Mr. and Mrs. Dennis W. Frey
 Mr. Harry Friedlander, Jr.
 Mr. and Mrs. Maurice E. Fritz
 Ms. Patty Fuessel
 Ms. Deborah Fuller
 Mrs. Gay Fuller
 Mr. Edward Furler, Jr.
 Mr. Edward L. Furman
 Mr. and Mrs. Gaylen Gage
 Ms. Mary K. Gailey
 Mr. and Mrs. Leslie Gale
 Mr. and Mrs. Wayne A. Gannon
 Mr. and Mrs. Leonardo Garcia
 Mr. and Mrs. James H. Garmon
 Mr. and Mrs. Harley J. Gary
 Ms. Paula Gentry
 Geonetric, Inc.
 GG Distributing LLC
 Mrs. Katherine Gibson
 Ms. Bettye J. Gilbert
 Gilead Sciences, Inc.
 Mr. and Mrs. Thomas W. Gilley
 Mr. Louis Gillispie
 Mr. C. D. Ginnich
 Mr. Uquhardt Gipson
 Mr. Jimmy D. Glasgow
 Miss Mary E. Glenn
 Mr. and Mrs. J. Christopher Glenney
 Ms. Edie L. Gobert
 Mr. and Mrs. Clarence H. Godfrey
 Ms. Barbara F. Golden
 Ms. Susan Gomez
 Mr. John D. Gondol
 Ms. Linda Gonzalez
 Ms. Maria Gonzalez
 Mr. and Mrs. Bobby M. Goodnight
 Ms. Frances L. Goucher
 Mr. and Mrs. Calvin Gould
 Mr. Jimmie Grace
 Mr. Rodney D. Grage
 Ms. Frances Gray
 Ms. Jean A. Gray
 Greater East Texas Chapter of
 Oncology Nursing
 Mr. Carl Green
 Mr. and Mrs. William R. Green
 Mr. and Mrs. Winfred L. Green
 Mr. and Mrs. Samuel J. Greenberg
 Mr. David E. Greer
 Mr. and Mrs. Bernice Griffin
 Mr. and Mrs. Robert L. Grigsby
 Mr. Elbert Grimes
 Mrs. Nadine S. Grimes
 Ms. Winnie Grissaffi
 Mr. William Groce
 Mr. and Mrs. Randall D. Grooms
 Mr. Glen Guernsey
 Ms. Rhonda Guthrie
 Mr. and Mrs. Jeffrey L. Haas
 Ms. Carol Haberle
 Mr. and Mrs. Fred J. Haberle
 Mr. Harold Hagle
 Ms. Ann Halcomb
 Mr. William Hall
 Mr. John Halley
 Mr. and Mrs. Lee Hallmark
 Ms. Linda B. Ham
 Ms. Joyce B. Hames
 Mr. and Mrs. Glen T. Hamilton
 Ms. Yvonne A. Hammons
 Ms. Dianne C. Hampton
 Ms. Hazel Hampton
 Mr. and Mrs. Larry P. Hampton
 Ms. Patricia A. Hampton
 Mrs. Paulette Hanks
 Mr. Richard B. Hardee
 Mrs. Lois K. Hardin
 Mr. and Mrs. Steve Hardy
 Ms. Dianne Hare
 Mr. and Mrs. Ross Haren
 Mr. and Mrs. Rex D. Hargrave
 Ms. Lynda Hargrove
 Mr. John Harmon
 Ms. Rebecca W. Harris
 Mrs. M. Suzanne Harrison
 Mrs. Claudia J. Hartley
 Mr. Harold L. Harvey
 Mr. Kenneth Haslett
 Ms. Doris P. Hassell
 Mr. Vernon Havis
 Mr. and Mrs. James A. Hawkins
 Mr. William P. Hayde
 Mr. and Mrs. Jon Hayden
 Ms. Sharon P. Hayden
 Mr. John Hayes
 Mr. Jessie L. Haynes
 Mr. N. W. Hays
 Mr. and Mrs. Raymond H. Hedge III
 Mr. John D. Heim
 Mr. Louis Heimer
 Dr. and Mrs. Steven J. Helf
 Mr. Leon Henderson
 Ms. Shirley Henderson
 Ms. Ruth Ann Hendricks
 Henry & Peters, P.C.
 Mr. Charles B. Hensley
 Ms. Onita Henson
 Mrs. Freddie Herrington
 Ms. Katherine Hibbs
 Ms. Molly Hickman
 Mr. Marshall B. Higginbotham
 Mr. Buddy N. Hill III
 Ms. Mary Hill
 Ms. Wanette Hilton
 Mr. Ralph Hiltz
 Ms. Ruby F. Hinton
 Mr. Wayne Hoffmann
 Mr. Lawrence Hofmann
 Mr. Harold D. Hogan
 Mr. Richard Holcomb
 Mr. and Mrs. Darrell Holiday
 Dr. Jack D. Hollada, DC
 Mr. Kenneth Holland
 Ms. Shirley Holland
 Mr. and Mrs. Danny C. Hollis
 Mr. James R. Hollis
 Mr. Charles E. Holmen
 Mr. and Mrs. Robert L. Holsomback
 Mr. and Mrs. Edward G. Holt
 Mrs. Martha B. Hook
 Ms. Armie Hooper
 Ms. Verna Hopper
 Mr. and Mrs. James Horton
 Hossley Lighting Associates
 Mr. Calvin Howard
 Hoya Vision Care
 Mr. James F. Hubbard
 Ms. Cathy Huddleston
 Mr. and Mrs. Joe D. Huffaker
 Ms. Judith Huffhines
 Mr. and Mrs. Lester Hughes
 Ms. Jonette Humphrey
 Mrs. Dorthy P. Humphries
 Mr. Joe T. Humphries

Ms. Maxine Hunt
 Ms. Joan G. Hutchins
 Mr. and Mrs. Larry L. Hutson
 Mr. and Mrs. Jeff G. Hyde
 Mr. Aubrey D. Ingram
 Mr. Don Ingram
 Mr. Wilson L. Ingram, Sr.
 Ms. Shirley Inselman
 iRhythm Technologies, Inc.
 Mr. and Mrs. Robert B. Irwin
 Dr. and Mrs. C. Noah Israel
 Mr. and Mrs. Alan R. Jackson
 Jacksonville ISD
 Mr. and Mrs. Kenneth W. Jacobe
 James I. Perkins Family Foundation
 Ms. Patsy James
 Janssen Pharmaceuticals, Inc.
 Mrs. Mary A. Jarecki
 Mr. and Mrs. Ben E. Jarvis
 Mrs. Janis M. Jeffrey
 Dr. Carolyn G. Jenks
 Mr. and Mrs. Chuck Jennings
 Ms. Glenda K. Jewett
 Mr. and Mrs. Thomas Jimerson
 Mr. and Mrs. Doyle W. Johnson
 Mr. James Johnson
 Mr. James D. Johnson
 Ms. Jean Johnson
 Ms. Linda L. Johnson
 Mr. Robert K. Johnson
 Ms. Sharon K. Johnson
 Ms. Virginia Johnson
 Ms. Mary K. Johnston
 Ms. Barbara Jones
 Mrs. Dottie F. Jones
 Mr. Jeff O. Jones
 Mr. and Mrs. Joe J. Jones
 Reverend and Mrs. L. A. Jones
 Mrs. Linda K. Jones
 Ms. Martha Jones
 Mr. and Mrs. Thomas E. Jones
 Ms. Sandra S. Jordan
 Mr. Neil Jowell
 Mrs. Howard L. Jowers
 Mrs. Lynne A. Justice
 Mr. Allen B. Kainer
 Ms. Allison A. Kay and
 Mr. David M. Jarvis
 Ms. Clara Kay
 KCI USA, Inc.
 Ms. Christy Kee
 Ms. JoAnn B. Kelley
 Mr. Jack Kempenaar
 Ms. Burnell Kennedy
 Ms. Kathryn Kennedy
 Ms. Wanda Kennedy
 Dr. and Mrs. Steven P. Keuer
 Mrs. Vyla B. King
 Ms. Martha M. Kirby
 Ms. Linda Kirkley
 Ms. Barbara Klinker
 Mr. Jerial A. Knight
 Ms. Mary Kolac
 Ms. Edythe Koonce
 Mr. and Mrs. Matthew Laine
 Mr. Gerald W. Lambert
 Mr. Luther D. Laminack
 Mr. Delmar J. Landers
 Ms. Mamie L. Laney
 Mr. Jimmy Lanfrey
 Ms. Terrilee Langen
 Lantheus Medical Imaging
 Mr. Salomon Laraperez
 Ms. Evelyn Law
 Ms. Janie Law
 Ms. Emily Leake
 Ms. Marisol Ledesma
 Mr. Mark Leger
 Ms. Kerry L. LeMaire
 Mr. Guy Leonard
 Mrs. Virginia S. Lessert
 Mr. John W. Lewis
 Mrs. Oretta F. Lewis
 Ms. Patricia Lewis
 Dr. and Mrs. Sauyu Lin
 Lindale ISD
 Lindale ISD High School
 Football Players
 Ms. Clara S. Lindley
 Mr. Dwight Lindop
 Mr. Marvin L. Lister
 Ms. Linda Liston
 Mrs. Marie A. Lively
 Mr. Harold R. Liverett
 Ms. Susan Lloyd
 LMT Wealth Management Group -
 Merrill Lynch
 Mr. Vincent Lobianco
 Mr. Thomas Lochridge
 Mr. Jay Lockhart
 Mr. and Mrs. Barry D. Lofquist
 Ms. Cheryl C. Losure
 Mr. Edsel M. Loving
 Mrs. Yvonne K. Loving
 Mr. and Mrs. David Lowe
 Mr. and Mrs. Peter D. Luczak
 Mr. Wilburn V. Lunn, Jr.
 Ms. Barbara Lykins
 Mr. Fernando Maciel
 Ms. Margaret Maddox
 Mr. Thomas Maddux
 Mr. James L. Madison
 Mr. and Mrs. Michael E. Mahfood
 Mrs. Deborah A. Mahler
 Mr. and Mrs. James L. Mallory
 Ms. Mamie Malone
 Mr. Ervey Maltos
 Mr. Donald Mann
 Ms. Juanita Manning
 Ms. Glenda G. Mannix
 Mr. Ted Mapes
 Mr. and Mrs. Billy W. Marable
 Mr. and Mrs. Ben Y. March
 Mr. and Mrs. Robert Marchell
 Mrs. Consuelo M. Marinez
 Ms. Diane C. Martin
 Ms. Marie E. Martin
 Stacy and Reid Martin Family
 Charitable Fund at East Texas
 Communities Foundation
 Ms. Janet Masker
 Mr. Shelby L. Massey
 Mr. Danny Mastin
 Mr. and Mrs. Carl L. Matthews
 Mr. and Mrs. Richard A. Matthews
 Mr. and Mrs. Larry N. Matthews
 Mr. Bob W. Maupin
 Ms. Karma S. Maxfield
 Ms. Elena Mayer
 Mr. Gordon J. Mayer, Jr.
 Mr. Fredrick D. Mayo
 Dr. and Mrs. James D. McAndrew
 Dr. and Mrs. James H. McBurney
 Ms. Jacqueline McCalla
 Mr. and Mrs. H. Wayne McCarley
 Ms. Carol McCarthy
 Mr. and Mrs. Brent McCauley
 Ms. Linda McCauley
 Ms. Doris A. McClanahan
 Dr. and Mrs. D. L. McClaugherty
 Mr. and Mrs. James D. McClure
 Ms. Patricia J. McClure
 Mr. and Mrs. Lamar McCowin
 Mr. and Mrs. Johnny McCoy
 Mr. and Mrs. Gerry D. McCrary
 Ms. Mabelle A. McDowell, NP
 Mr. Michael W. McEwen
 Mr. and Mrs. M. G. McGee
 Mr. and Mrs. Theodore McGee
 Ms. Marjorie McGraw-Reynolds
 Mr. and Mrs. Edward A. McKenney
 Mr. Wilbur McKinney
 Mr. and Mrs. Michael McLaney
 Mrs. Patsy A. McLeod
 Mr. Robert McMakin
 Mr. Frances McMullen
 Mr. Jim McPeck
 Ms. Phyllis C. Medley
 Medtronic Inc.
 Mr. and Mrs. Clarence C. Meiske
 Mr. Joseph A. Mele
 Ms. Emily Melendrez
 Ms. Suzanne S. Melhart
 Mr. Andrew R. Melontree
 Mr. Robert C. Melton, Sr.
 Merck & Co., Inc.
 Mr. John Merritt
 Ms. Berenda A. Mewborn
 Ms. L. G. Miller
 Ms. Marina Miller
 Mr. Clyde M. Mills
 MiMedx Group
 Mr. Jung N. Min
 Mr. Melburn E. Minter
 Mr. Randy Modesitt
 Ms. Marilyn A. Moharer
 Mr. Billy L. Montgomery
 Ms. Dorothy J. Moody
 Ms. Linda T. Moody
 Ms. Gay H. Moon
 Mr. Michael W. Moore
 Mr. and Mrs. Robert E. Moore
 Mr. Ronald W. Moores
 Ms. Sarah V. Moreland
 Ms. Vernell Moreland
 Mr. and Mrs. Charles Morgan
 Ms. Jean A. Morgan
 Mr. James Morris
 Mr. and Mrs. Walter Moseley
 Mr. James O. Moses
 Mr. and Mrs. Artis B. Mosley, Jr.
 Ms. Donna C. Mullins
 Mr. and Mrs. Carlos M. Munoz
 Ms. Sue Murff
 Ms. Marjorie Mustard
 Mr. Miles H. Mutchler
 Ms. Joyce Myers
 Ms. Sue Myers
 Myriad
 Mr. Gregory Nantz
 Dr. and Mrs. Fadi Nasrallah
 Mr. and Mrs. Robert A. Navarre
 Mr. and Mrs. Andy Navarro
 Mr. Gilbert G. Navarro
 Mr. and Mrs. C. R. Neal
 Mr. Jasper T. Neal
 Ms. Glenda Neel
 Mr. Jack J. Neely
 Ms. Janie B. Neely
 Mrs. Jane C. Neff
 Ms. Sharon L. Neff
 Tobie Neller
 Mr. Bruce W. Nelson
 Mr. Jerry Nelson
 Mr. Wayne R. Nelson
 Mr. Paul F. Nespodzany
 Mr. Eddie M. Nesser
 Nestle Health Science
 Mrs. M. Gayle Newby
 Dr. and Mrs. Jerry A. Newton
 Mr. and Mrs. William Newton
 Ms. Hoa Nguyen
 Mr. Billy W. Nixon
 Dr. and Mrs. Michael J. Norton
 Dr. Brett R. Noteware
 Mr. and Mrs. Danny Noteware
 Novartis Pharmaceuticals
 Corporation
 Novo Nordisk Pharmaceuticals Inc.
 Larry and Terri Null
 Mr. Melvin R. Nutt
 Mr. and Mrs. Ronald R. Oakes
 Mr. Lewie Obert
 Ms. Sharon O'Brien
 Mr. Bennett A. Oguegbu
 Ms. Patricia R. Olson
 Mr. and Mrs. Alfred W. Olsson, Jr.
 Mr. and Mrs. Michael T. O'Neill
 Mr. and Mrs. Joseph Z. Ornelas
 Mr. Anthony S. Orsino
 Mr. Dennis Osborn
 Ms. Jacqueline K. Osteen
 Mr. and Mrs. L. Paul Owen
 Mrs. Peaches Owen
 Louis and Peaches Owen Donor
 Advised Fund at East Texas
 Communities Foundation
 Ms. Billie Owens
 Mr. Bruce Owens
 Ms. Dorothy Owens
 Ms. Phyllis Oxman
 Mr. William Pace
 Mrs. Bonnie C. Palmer
 Paradigm HomeCare
 Ms. Martha A. Parker
 Ms. Carole A. Parker-Wilson
 Ms. Carolyn A. Parkhill
 Mr. and Mrs. Richard D. Parks
 Mr. Paul Pasterczyk
 Mr. Alfred R. Pate, Jr.
 Pastor and Mrs. Wesley L. Pate
 Savitaben J. Patel
 Ms. Vanita Patel
 Ms. Carolyn L. Patrick
 Mr. Ronnie Patterson
 Mrs. Fern L. Paul
 Mr. and Mrs. John Y. Payne
 Ms. Mary L. Pendleton
 Ms. Laverne Perkins
 Ms. Lavoise T. Perkins
 Ms. Frances I. Perry
 Ms. Linda G. Perry
 Mr. Herman Peter
 Mr. G. C. Pettey III
 Mr. Joe E. Petty
 Peveto & Associates, Inc.
 Mr. and Mrs. Larry D. Pfeffer
 Pfizer, Inc.

Foundation DONORS 7.1.17 – 6.30.18

Mr. Gerald Phariss
 Mr. Thomas Pharr
 Mr. Dwight T. Phelps
 Mr. Edward Philips
 Mr. and Mrs. Todd Phillips
 Ms. Phyllis Pickens
 Mr. Ronald J. Pieper
 Mr. and Mrs. C. W. Pilgrim
 Piney Woods Regional
 Advisory Council
 Mrs. Irma E. Pinkston
 Mr. and Mrs. Richard A. Pinto
 Ms. Shirley Pitre
 Mr. Gordon Pittman
 Mr. and Mrs. Robert Plamann
 Mr. Horace C. Plunk
 Mr. and Mrs. Erly B. Polk
 Mr. and Mrs. Billy Jim Pollard
 Ms. Laurette M. Pollard
 Mr. Cecil Pond
 Mr. and Mrs. William B. Pope
 Portola Pharmaceuticals, Inc.
 Mr. and Mrs. John L. Powers
 Mr. and Mrs. Kyle L. Preston
 Mrs. Joan Price
 Mr. Paul E. Price
 Mr. and Mrs. J. Randall Pritchard
 Mr. and Mrs. Jason J. Proctor
 Ms. Patricia A. Prodonovich
 Mr. and Mrs. Davy L. Pross
 Mr. and Mrs. Thomas D. Pugh
 Mr. Walter Pulley
 Mr. and Mrs. Bill Pulliam
 Puma Biotechnology
 Ms. Marianne Quibrall
 Quilters Guild of East Texas
 Mr. Alan Quinn
 Ms. Alice Quinn
 Ms. Patricia Quinn
 R & K Distributors, Inc.
 Ms. Velma K. Raboine
 Mr. James G. Ragle
 Mr. Sheridan C. Ramos
 Ms. Sharon A. Ramsey
 Mr. Arcadio R. Ranido
 Ms. Carolyn D. Rasco
 Mr. Satish Rawal
 Mr. Charles Ray
 Mrs. Francis Ray
 Mr. and Mrs. Louis I. Ray
 Mr. Robert W. Ray
 Mr. George L. Reasoner
 Ms. Mary E. Redd
 Mr. and Mrs. Troy E. Redd
 Mrs. Barbara J. Reddick
 Mr. and Mrs. Richard R. Redman
 Ms. JoAnn P. Redmon
 Mr. and Mrs. John M. Reece
 Ms. Sue Reese
 Regions Bank Tyler
 Ms. Ruth Reid
 Dr. Margaret R. Reitmeyer
 Mr. and Mrs. Robert Rekieta
 Mr. and Mrs. John Reynolds
 Ms. Lucile Rhodes
 Mrs. Doshie M. Rice
 Mr. and Mrs. Douglas E. Richards
 Ms. Avis J. Richardson
 Mr. R. B. Richardson
 Mr. and Mrs. Ralph R. Richason
 Mr. George Richie
 Ms. Esther Rightmyer
 Mr. James D. Ripley
 Mr. and Mrs. J. Reed Rippey
 Mr. Peter Roach
 Mr. Woodrow M. Roark, PC
 Mr. and Mrs. Michael Robards
 Mrs. G. Y. Roberts
 Ms. Bobbie Robinson
 Mr. and Mrs. Vergil Rodgers
 Mr. Rudy Rodriguez
 Mrs. Frances T. Rogers
 Ms. Glynnda L. Rogers
 Ms. Linda Rogers
 Ms. Mary Rogers
 Mr. Phil S. Rogers
 Mr. Juan Rojas
 Ms. Mary E. Rollins
 Ms. Arteria Rosborough
 Ms. Linda S. Rose
 Estate of Bonnie Hardin Ross
 Ms. Sandra B. Rouse
 Mr. and Mrs. Mike Rowan
 Mr. and Mrs. George O. Rowe
 Ms. Doris Rowley
 Ms. Jeanne S. Rozelle
 Ms. Patti M. Rucker
 Ms. Cindy B. Rudd
 Ms. Linda Rudd and
 Mr. Steve P. Hellmuth
 Ms. Mitsi R. Runyan
 Saleh Family Foundation
 Salix Pharmaceuticals, Inc.
 Dr. and Mrs. C. Fagg Sanford
 Mr. Ronald L. Sanford
 Sanofi-Aventis
 Ms. Marsha Sasser
 Mr. and Mrs. William Saxton
 SCA Pharmaceuticals, LLC
 Ms. Yvette M. Schaded
 Ms. Leigh A. Schedule
 Mr. James A. Schill
 Mr. Allen F. Schmidt
 Ms. Ann D. Schmidt
 Ms. Marilyn Schunatz
 Ms. Anna Scogin
 Mrs. Joyce R. Scott
 Ms. Margie L. Scott
 Mr. Ray D. Scott
 Mr. Richard V. Scott
 Mr. and Mrs. David L. Seale
 Seattle Genetics, Inc.
 Ms. Mary Sedberry
 Mr. and Mrs. Clyde R. Seewald
 Ms. Dora L. Session
 Mr. Andrew Shaw
 Ms. Rhonda C. Shaw
 Mr. and Mrs. William Sheehy
 Shelby County/
 Chamber of Commerce
 Ms. Dian Shelton
 Mr. and Mrs. Will Shelton
 Ms. Monika F. Shepherd
 Mr. Craig Sheridan
 Ms. Jo Shipp
 Mr. and Mrs. Travis S. Shipp
 Dr. Hope and Mr. John Short
 Mr. and Mrs. Ron Shultz
 Ms. Elaine C. Simmons
 Mr. Royce Simmons
 Mr. and Mrs. William F. Simon
 Mr. Ronald G. Singley
 Ms. Janelle D. Sitton
 The Honorable and
 Mrs. Jack Skeen, Jr.
 Mrs. Monty J. Small
 Ms. Barbara Smart
 Mr. Alfred Smith
 Ms. Almarie C. Smith
 Mr. Charles Smith
 Mr. Denny M. Smith
 Mr. Joe M. Smith
 Mrs. Kari B. Smith
 Mr. Leonard A. Smith
 Mr. Mark D. Smith
 Mr. Otto C. Smith
 Mr. William C. Smith
 Mr. and Mrs. Harold Smotherman
 Mrs. Virginia E. Sneed
 Mr. and Mrs. Jonathan S. Snyder
 Southside Bank
 Sparks Ophthalmology
 Mr. and Mrs. James R. Spears
 Mr. and Mrs. Jackie Spencer
 Mr. and Mrs. Jerry J. Spencer
 Mr. and Mrs. Bryant E. Spradley
 Ms. P. Renee Stacy, NP
 Ms. Betty A. Stafford
 Mrs. Sharon W. Stanford
 Ms. Joyce E. Stanley
 Ms. Elizabeth A. Stansel
 Mr. and Mrs. Ronald Starks
 Dr. and Mrs. William H. Starling
 Ms. Betty A. Stasaitis
 State Farm Companies Foundation
 Mr. and Mrs. Jay Stenklyft
 Ms. Billie J. Stephens
 Dr. Marvin G. Stephens, Jr.
 Mr. and Mrs. Jim Stephens
 Mr. and Mrs. Terry M. Stephenson
 Mr. and Mrs. Duane Stevens
 Mr. and Mrs. Jim Stevens
 Mr. Charles Stewart
 Ms. Martha N. Stewart
 Ms. Margie W. Stone
 Mr. and Mrs. Curtis Stout
 Ms. Rene Stovall
 Mr. and Mrs. Roger S. Strain
 Ms. Linda S. Stripling
 Mr. and Mrs. Robert J. Strong
 Ms. Linda Strong
 Mr. and Mrs. David R. Sullivan
 Ms. Eleanor Sutherlin
 Mrs. Elizabeth Sutton
 Mr. Miles S. Sutton
 Mr. Billy Swink
 Ms. Geri Taber
 Ms. Lucy A. Taft
 Taiho Oncology, Inc.
 Takeda Pharmaceuticals
 America, Inc.
 Mrs. Mary Anne L. Tarrant
 Mr. Carthel Taylor
 Mr. Clevin F. Taylor
 Mr. and Mrs. Ronnie D. Taylor
 Mr. and Ms. Terry Taylor
 Tesaro
 TEVA Pharmaceuticals
 Texas Bank and Trust
 Texas Oncology - Tyler
 The Genecov Group, Inc.
 The Heights of Tyler
 The R. W. Fair Foundation
 Mr. and Mrs. Randy Thedford
 Mr. Don Thode
 Ms. Lucille M. Thomas
 Mrs. Merle Thomas
 Mr. and Mrs. Craig E. Thomasson
 Mr. Ben Thompson
 Mr. and Mrs. Bob L. Thompson
 Mr. Charles Thompson
 Ms. Era Thompson
 Mr. Loran S. Thompson
 Mrs. Marilyn M. Thompson
 Mrs. Sandra G. Thompson
 Mr. George T. Tidmore
 Ms. Mary Tidwell
 Mr. George R. Till
 Mr. Seabern Y. Tindel
 Mr. Victor W. Ting
 Ms. Virginia Tinner
 Mr. and Mrs. Harry R. Tosh
 Trane - Ingersoll Rand
 Mr. and Mrs. Robert J. Triller
 Ms. Evelyn H. Trojacek
 Troup ISD
 Ms. Gloria Tucker
 Ms. Mary W. Tucker
 Mr. and Mrs. Paul Tugwell
 Ms. Jean W. Tunnell
 Ms. JoAnn Turner
 Ms. Laron Turner
 Mr. Maxie I. Turner
 Tyler Continue CARE Hospital
 Tyler Junior College
 Mr. and Mrs. Garrett Tywater
 Mr. John Underwood
 Ms. Shirley Unfred
 Mr. Joe Valladares
 Mr. and Mrs. Carl W. Vanbuskirk
 Mr. and Mrs. Ray L. Vaught, Jr.
 Mr. and Mrs. John Veach
 Ms. Joyce Venable
 Mr. John H. Vick, Jr.
 Mr. and Mrs. Weldon E. Viertel
 Ms. Nelleva M. Vining
 Mr. and Mrs. Mark K. Vogl
 Mr. and Mrs. Andrew von
 Eschenbach
 Dr. and Mrs. Tariq M. Vora
 Mr. B. J. Voss
 Ms. Pamela Wade
 Mr. Joe Waldrop
 Ms. Preeni Walgama
 Mr. and Mrs. Johnny Walker
 Mr. Justin P. Walker
 Ms. Marsha Walker
 Ms. Mary A. Walker
 Ms. Ann C. Wallace
 Mr. and Mrs. Curtis R. Wallace
 Mr. Don F. Wallace
 Ms. Lula M. Wallace

Ms. Margaret C. Wallender
 Mr. and Mrs. Kevin W. Walsh
 Ms. Linda Walsh
 Ms. Anita Warren
 Mr. and Mrs. Charles W. Warren
 Ms. Priscilla Warren
 Ms. Shirley R. Watterston
 Mr. and Mrs. Dickie D. Waye
 Mr. Havard W. Weatherton
 Ms. Jean Weaver
 Mr. and Mrs. Paul Webb
 Mr. Phillip A. Weber
 Mr. and Mrs. Gary L. Weeks
 Mr. and Mrs. Dorles W. Weeks
 Ms. Lynda Weitzman
 Ms. Gloria V. Welch
 Mr. and Mrs. Richard E. Wells

Mr. and Mrs. Robert Wells
 Mr. and Mrs. Neil S. West
 Ms. Lou Ann Wester
 Ms. Lou A. Westhoff
 Mr. and Mrs. Gregory C. Weston
 Ms. Ada White
 Mr. and Mrs. John B. White
 Ms. Glenna White
 Mr. Kenneth White
 Mr. Wilbert White
 Whitehouse ISD
 Mr. Gary W. Whitlow
 Dr. and Mrs. Clayton E. Whitney
 Mr. Jim R. Whitt
 Ms. Shirley Whitwell
 Ms. Jeannie Wiggins
 Mr. and Mrs. Thomas A. Wilken

Ms. Evelyn L. Williams
 Dr. and Mrs. Hampton D. Williams
 Mr. and Mrs. John P. Williams
 Ms. Ruth Williams
 Mr. and Mrs. David G. Wilson
 Mr. Donald Wilson
 Mr. and Mrs. James A. Wilson
 Mr. Jerrold Wilson
 Ms. Joyce Windsor
 Mr. George Wise
 Mr. and Mrs. Richard D. Wixom
 Mr. Dan C. Woldert
 Mr. Charles Womack
 Mr. Bobby Wood
 Mr. Larry T. Wood
 Mr. and Mrs. Richard H. Wood
 Mr. and Mrs. Jerry N. Woodlee

Mrs. Ann S. Woods
 Mr. James E. Woodson
 Mr. and Mrs. Jerry R. Woody
 Mrs. Patricia A. Woolard
 Ms. Mary Turney Woolery
 Ms. Marcell Worthen
 Mr. Jerry R. Wright
 Ms. Patricia B. Wright
 Mr. Gary Wyman
 Ms. Patricia E. Young
 Mr. Woodrow Zajicek
 Mr. and Mrs. Jerome Zapletal
 Ms. Carol Zwan and
 Mr. Don McClellan

Founders Society members 2018

Mr. James H. Abbott
 Dr. and Mrs. Kenneth L. Anderson
 Mr. Manfred E. Bartsch
 Col. and Mrs. John O. Childs
 Mrs. Dorothy Clark
 Dr. D. M. Edwards

Mr. Robert F. Faulkner
 Mr. and Mrs. Samuel J. Forester
 Mr. and Mrs. Randall D. Grooms
 Mr. and Mrs. Raymond H. Hedge III
 Mrs. Martha B. Hook
 Mr. and Mrs. James L. Mallory

Mr. and Mrs. William Newton
 Mrs. Peaches Owen
 Mr. and Mrs. Kenneth E. Roddy
 Mr. and Mrs. Thomas D. Strickland
 Mr. and Mrs. Harry R. Tosh
 Dr. and Mrs. Clayton E. Whitney



Save the date!

A TOAST to East Texas

April 1 – May 15, 2019

For more information about becoming a sponsor, hosting or attending an event:
christustmf.org/toast | suzie.rippy@tmfhc.org | 903.606.4752



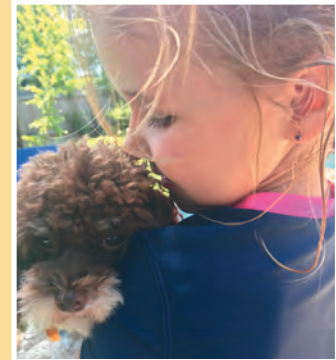
CMNH HONORS 7.1.17 – 6.30.18

Caroline and Natalie Adair
 Ms. Amanda Adair
 Margo H. Adams
 Ms. Margie Phillips
 Gunner Colt Alsadi
 Mr. and Mrs. Alan R. Johnston
 Dr. and Mrs. Mark R. Anderson
 Mr. and Mrs. Lindsey Bradley
 Mr. and Mrs. Billy Anderson
 Mr. and Mrs. Lindsey Bradley
 Mr. and Mrs. Don L. Arnwine
 Mr. and Mrs. Lindsey Bradley
 Dr. Mark M. Barret
 Mr. and Mrs. Wayne Allen
 Bill Bradley
 Mr. and Mrs. Lindsey Bradley
 Catherine Bradley
 Mr. and Mrs. Lindsey Bradley
 Lindsey Bradley
 Mr. and Mrs. Michael G. Hines
 Julie and Tom Brown
 Mr. and Mrs. Lindsey Bradley
 Mr. and Mrs. Randy Garrett
 Dr. and Mrs. Kevin D. Green
 Lauren Brown
 Bell Elementary Global
 Communications Academy
 Thomas J. "Tom" Brown
 Mr. and Mrs. Jim Gillen, Jr.
 Casey Bryan Family
 Mrs. Mildred H. Grinstead
 Anna Gray Buckley
 Mr. and Mrs. J. Roe Buckley
 Jeff Buford
 Mr. and Mrs. Lindsey Bradley
 J. D. Burns
 Ms. Denise M. Richardson
 Eleanor G. "Ellie" Butts
 Agropius Operating, LP
 Katie and Reagan Butts
 Mr. and Mrs. Randy Garrett
 Danis and Robert Korzeniewski
 William D. "Will" Butts
 Agropius Operating, LP
 Bailynn and Bentley Byrd
 Mr. and Mrs. Danny C. Hollis
 Mr. and Mrs. Bill Chen, Ph.D.
 Mr. and Mrs. Lindsey Bradley
 Mr. and Mrs. Craig M. Chesley
 Mr. and Mrs. Lindsey Bradley
 Mr. and Mrs. Randall V. Childress
 Mr. and Mrs. Lindsey Bradley
 Sandra Clark
 Mr. and Mrs. A. W. Stafford

Geroge Conklin
 Mr. and Mrs. Lindsey Bradley
 Mr. and Mrs. Robert C. Curtis
 Mr. and Mrs. Lindsey Bradley
 Debbie T. Dickerson
 Ms. Margie Phillips
 Kinsie JoAnn Durham
 Mr. and Mrs. S. Ray Durham
 Sister Loretta Theresa Felici
 Mr. and Mrs. Lindsey Bradley
 Casey Fisher
 Sharon, Erin and Lee Roberts
 Mr. and Mrs. Scott Fossey
 Mr. and Mrs. Lindsey Bradley
 Mae Frith Fulgham
 Mr. and Mrs. Wes Hightower
 Eli and Jude Garcia
 Mr. and Mrs. Richard Perryman
 Mr. and Mrs. Paul Generale
 Mr. and Mrs. Lindsey Bradley
 Devona Gordon
 Mr. and Mrs. Rick Gordon
 Ren Wilde Gordon
 Mr. and Mrs. Rick Gordon
 Daniela Guzzetta
 Mr. and Mrs. Joseph Guzzetta
 Mr. and Mrs. Joseph J. Guzzetta, Jr.
 Mr. and Mrs. Dan Hardiman
 Mr. and Mrs. Lindsey Bradley
 Mr. and Mrs. Paul Harvey
 Mr. and Mrs. Lindsey Bradley
 Garrett Howell
 Ms. Linda S. Fry
 Hampton Hughey
 Ms. Nicole Nalbach
 Ms. Karon Riepe
 Mr. and Mrs. Jeff G. Hyde
 Mr. and Mrs. Lindsey Bradley
 Mr. and Mrs. Alan R. Jackson
 Mr. and Mrs. Lindsey Bradley
 Leslie Jeffcoat
 Mr. and Mrs. Lindsey Bradley
 Mr. and Mrs. Bryan Johnson
 Mr. and Mrs. Lindsey Bradley
 Henry Jones
 Anonymous
 Jane Jordan
 Mr. and Mrs. Don Carroll
 Mr. and Mrs. Chris Karam
 Mr. and Mrs. Lindsey Bradley
 Dr. Jennifer M. Kent
 Mr. and Mrs. Ray Kent
 Dr. and Mrs. Steven P. Keuer
 Mr. and Mrs. Lindsey Bradley

Lucas Taylor Kraus
 Mr. and Mrs. Bill Farnum
 Robin Insalaco
 Mr. and Mrs. Robert H. Patterson, Jr.
 Mr. and Mrs. Bobby Lambert
 Mr. and Mrs. Lindsey Bradley
 Dottie Latta
 Dr. and Mrs. Paul N. Latta
 Brody Keith Little
 Mr. and Mrs. S. Ray Durham
 Mr. and Mrs. Brian Margetts
 Mr. and Mrs. Lindsey Bradley
 Karsyn and Paisley McMichael
 Mr. and Mrs. Eric Sivertson
 Megan Arnold Miles
 Dr. and Mrs. T. Jeff Arnold
 Dr. and Mrs. Fadi Nasrallah
 Mr. and Mrs. Lindsey Bradley
 Mr. and Mrs. Joseph Z. Ornelas
 Mr. and Mrs. Lindsey Bradley
 Peaches Owen
 Ms. Rose K. Brown
 Mr. and Mrs. Lindsey Bradley
 Mr. and Mrs. Robert Owens
 Mr. and Mrs. Lindsey Bradley
 Riley and Whitman Robbins
 Ms. Margo H. Adams
 Mr. and Mrs. Earl W. Clawwater III
 Mr. and Mrs. Gregg A. Davis
 Mr. and Mrs. Robert S. Davis Jr.
 Mr. and Mrs. Jerry L. Gouge
 Mr. and Mrs. Michael K. Hogan
 Mrs. Gerry L. Killian
 Ms. Deborah Marcontell
 Mrs. and Mr. Clay McCain
 Mr. and Mrs. William C. Robbins
 Cathy Shipp and Associates
 Realty, LLC
 Mr. and Mrs. Steve Simmons
 Mr. and Mrs. Jonathan S. Snyder
 Ms. Karan Wroten
 Claire, Callie and Seth Rowan
 Mr. and Mrs. Mike Rowan
 Libby Simmons
 Ms. Margie Phillips
 Luke and Nathan Skinner
 Mr. and Mrs. Matthew D. Skinner
 Christopher "Roo" Sukiennik
 Mr. and Mrs. S. Ray Durham
 Jila Tanha
 Anonymous
 Dr. Patrick R. Thomas
 Mr. and Mrs. Don L. Arnwine
 Larry D. Thompson, Jr.
 Mr. Larry D. Smith

Dr. Turner
 Mr. and Mrs. Daniel L. Rodell
 Marvin Vallejo
 Mr. and Mrs. Howard N. Taliaferro
 Dr. and Mrs. Frank T. Ward
 Mr. and Mrs. Billy J. O'Barr
 Carolyn A. Webster
 Mr. and Mrs. Craig Dickerson
 Destiny M. Williams
 Ms. Ethel Mae King
 Mrs. Bertha A. McAfee
 Ms. Helen Richardson
 Ms. Ann Z. Willeford





CMNH
MEMORIALS

CMNH MEMORIALS 7.1.17 – 6.30.18

Mary Alexander
Mr. and Mrs. Bill Pulliam
Todd Anderson
Denise and Charlie Sorrells
Timothy Blackmon
Mr. and Mrs. Harry B. Whitehurst
William M. Burney, Sr.
Mr. and Mrs. Craig Dickerson
Jorge Daniel Burns
Denise M. Richardson
Carl Burquist
Denise and Charlie Sorrells
Ricky Casey
Mr. and Mrs. Harry B. Whitehurst
Jim Chanslor
Denise and Charlie Sorrells
William H. "Bill" Cleary
Mr. and Mrs. John McComic
Ginny Cook
Denise and Charlie Sorrells
Julia Cruz
Mrs. Denise E. Cruz
Connor Blake Curts
Mr. and Mrs. Danny D. Curts
Jean Deem
Denise and Charlie Sorrells
B. Aron Duncan
Mr. and Mrs. Harry B. Whitehurst
Linda Ellis
Mr. and Mrs. Harry B. Whitehurst
Mollie Eltife
Mrs. Denise E. Cruz
Mrs. Mary Lauren Faulkner
Hosea L. Fain, Sr.
Mrs. Ester J. Fain
Laura Lea Fletcher
Major and Mrs. Gailon Fletcher (Ret)
Kenneth Godden, Sr.
Denise and Charlie Sorrells
Robert "Bobbie" Gonzalez
Lucy and Edward Castro
Mark Grady
Mr. and Mrs. Arthur J. Grady
Mickey Haisten
Ms. Betty Haisten
Jacko Hargrove
Denise and Charlie Sorrells
Mary Jane Herrington
Mr. and Mrs. Harry B. Whitehurst
Jason L. Hightower
Anonymous
Mrs. Vada Fields
Mr. and Mrs. Tony Gilbreath
Mr. and Mrs. M. Ronald Hall
Ms. Amy Hightower

Mr. and Mrs. Don Hightower
Mrs. Horace Ray Lewis
Mila C. Hightower
Mr. and Mrs. Craig Dickerson
The Holcombe Family
Denise and Charlie Sorrells
Larry J. House
Mr. and Mrs. Harry B. Whitehurst
Joyce Howell
Denise and Charlie Sorrells
Wardell Starr Jackson
Ms. Devoria C. Jackson
Linda Jordan
Mr. Royce E. Jordan
Mellie W. Joslin
Mr. and Mrs. Harry B. Whitehurst
Tyler Kidwell
Mrs. Mary Lauren Faulkner
Horace Ray Lewis
Mr. and Mrs. Don Hightower
Mr. and Mrs. Larry J. Lewis
Glenda J. "Nanny" Lloyd
James and Laura Blackburn
Mr. and Mrs. Chris Carns
Mr. and Mrs. Kyle Lee
Mr. and Mrs. Matthew D. Skinner
Joyce E. "Joy" Lookabaugh
Mr. and Mrs. Harry B. Whitehurst
Mary A. McCain
Mr. and Mrs. Craig Dickerson
Mike McClean
Al & Peggy Dematteis
Family Foundation
Lt. Jack McGuffin, Jr.
Mr. Gary W. Frederick
Jim McKellar
Denise and Charlie Sorrells
Johnny Merriwether
Mrs. Cathy Merriwether
R. L. Miller
Mr. and Mrs. Zola George
Isaih Moa
Mr. and Mrs. Charles F. Nicholas
Angela M. Morgan
Mr. and Mrs. Thomas G. Morgan
Emslee Rhea Morris
Harrington Cancer and
Health Foundation
Mr. and Mrs. Jerry Quinto
Hugh Morris
Ms. Sandra L. Huffman
Timothy Morrison
Mr. and Mrs. Steve Sutton
Dorothy A. Morton
Mr. and Mrs. Harry B. Whitehurst

Francisca Navarro
Denise and Charlie Sorrells
Ruth Elgin Nordyke
Ms. Rhonda Butler
M P Industries, Inc.
Mr. and Mrs. Bobby McGary
Mary Ann and Steve Whited
The Family of Carolyn and
John Whitney
Carl R. Ogletree III
Mr. and Mrs. Charles Epstein
Andrew C. Orr
Mr. and Mrs. Craig Dickerson
Mike Pirtle
Mr. and Mrs. Bill Pulliam
Steve Pirtle
Mr. and Mrs. Bill Pulliam
Christopher Pope
Ms. Kimberly J. Butler
Reverend Paul W. Powell
Mr. and Mrs. Craig Dickerson
Flenell "Jack" Redwine
Mr. and Mrs. Roderick Redwine
Elizabeth Leigh Rowan
Mrs. Valerie Anderson
Mr. and Mrs. John F. Berry
Mr. and Mrs. Eddy Franks
Mr. and Mrs. George R. Fryer
Mr. and Mrs. Robin Heindel
Ms. Patricia S. Machin
Dr. and Mrs. Todd M. Nickel
Mr. David H. Nordyke
Dr. and Mrs. J. Mike Rowan, Jr.
Mr. and Mrs. Glenn Wiggins
Robert Lee Rowan
Denise and Charlie Sorrells
Sean Ryan
Mr. and Mrs. Harold D. Coffey
Edgar I. "Ed" Scudder
Mr. and Mrs. Harry B. Whitehurst
Monty J. Small
Mr. and Mrs. C. K. Baker
Mr. and Mrs. L. Braxton Cowan
Ms. Betty Haisten
Mineola Community Bank
Ms. Patricia Sanders
Ms. Julie Sharff
Small Farms
Karen Renee Smith
Ms. Virginia A. Smith
William A. Stanley
Ms. Joyce E. Stanley
John Stephens
Mr. and Mrs. Hal K. Bertram

Michael C. Tave
Ms. Eula M. Tave
Francisca Valles
Denise and Charlie Sorrells
Roberta Mauldin Way
Mrs. Minerva C. Robinson
Dorothy Lucille "Lucy" Weissmann
12 Ordinary Women
Dr. and Mrs. T. Jeff Arnold
Ms. Margaret Beard
Lori and Travis Booher
Mrs. Robyn Myers Bossom
Mr. and Mrs. Rees T. Bowen
Ms. Laura Bowrey
Mrs. Alexandra Carter
Ms. Cheryl O. Chase
The Daniel Family –
Matt, Jenny, Greta and Henry
Dr. Samantha Dewalt
Mr. and Mrs. John K. Dunlap
Mr. and Mrs. Jarrett Gunnels
Mr. and Mrs. Timothy P. Kelly
Lake Forest Book Club
Christol Leon
Ms. Vicky McDonnell
Kevan, Beth and Steven Meadors
Bob, Lisa Myers and Family
Mrs. Meghan Perry
Dr. and Mrs. Harlan Pollock
Ms. Susan D. Rands
Mrs. Alyse Reynolds
Several Anonymous Women (SAW)
Ms. Alyson Scholz
Ms. Lauren Stack
Mr. and Mrs. Michael H. Stephens
The Tallis Family
The Wonders
Mr. and Mrs. Adam Varnado
Ms. Alexa Watt
Marianne Wooley
Ms. Dolores M. Clark



CMNH DONORS 7.1.17 – 6.30.18

Access to Mobility
Ms. Erin Acker
Ms. Margo H. Adams
Mr. and Mrs. Omer I. Adams
Ms. Betty Adkins
AFLAC
Mr. Jonathan Agnew
Ms. J. A. Alexander
Mr. and Mrs. Bruce C. Allen
Ms. Christina M. Allen
Dr. and Mrs. Brian C. Allgaier
Mr. and Mrs. Patrick H. Allison
Mr. Reynaldo Ambe
American Academy of
Ambulatory Care Nursing
Mr. and Mrs. Todd R. Anderson
Ms. Angela L. Anderson
Ms. Melissa A. Andrews
Mr. Mike Andrews
Anheuser-Busch, Inc.
Anonymous
Apple Homecare Medical
Supply, Inc.
Ms. Alma B. Arenivas
Ms. Jennifer L. Armstrong
Ms. Rebekkah L. Armstrong
Mr. and Mrs. James W. Arnold, Jr.
Mr. and Mrs. Don L. Arnwine
Mr. Chad Atchley
Athens ISD
Atlas Credit Company
Mrs. Stephanie C. Attebery
Austin Bank of Texas, NA
Mr. Raymundo Avila
Bacon Family of Dealerships
Ms. Michelle M. Baetz
Mr. William A. Bailey
Bailey's Ace Hardware
Dr. and Mrs. Doug Baker
Ms. Violet L. Baker
Mr. and Mrs. James Banks
Mr. and Mrs. Drew Bankston
Ms. Sheree Barclay
Ms. Connie Barnes
Dr. Kathryn A. and
Mr. Gary V. Barnett
Mr. Larry Barnett
Mr. and Mrs. James Barnwell
Mr. and Mrs. Edward Barret
Barbara and Billy Bass, Jr.
Mr. Noah R. Batchelor
Mr. and Mrs. Terry G. Bates
Mr. Grady Batton II
Mr. Rodolfo Bautista
Mr. and Mrs. Drew H. Beams

Ms. Lily Beasley
Ms. Yvonne M. Beaton
Mr. and Mrs. Phillip Beck
Mr. Billy J. Beckworth
Ms. Neva Bell
Ben Franklin Plumbing
Mrs. Tracey A. Bennett
Mrs. Beverly J. Beranek
Mr. and Mrs. Robert N. Bergfeld, Dr.
Mr. and Mrs. Christopher L. Bergfeld
Mrs. Linda F. Bettis
Ms. Rebecca A. Beu
Ms. Cynthia Bewley
Ms. Glenna Bilberry
Mr. and Mrs. John Bill
Mrs. Virginia L. Billings
Mr. and Mrs. Ali R. Birjandi
Ms. Deanna E. Bishop
Ms. Stephanie Bishop
Mr. and Mrs. Jarod Bitter
Mr. and Mrs. Thomas D. Blair
Mrs. Virginia Blalock
Mr. and Mrs. Douglas G. Bolles
Mr. John Bordas
Ms. Connie M. Borunda
Mr. and Mrs. G. Tim Boswell
Bosworth & Associates
Mrs. Diane C. Bottoms
Mr. and Mrs. Ferdinand J. Boutin
Ms. Carrie D. Bower
Mr. and Mrs. James H. Bowers
Ms. Jackie V. Bowling
Mr. and Mrs. Dennis E. Box
Mr. Robert M. Boyd
Mr. Ky E. Boyer
Ms. Kay S. Bracken
Mr. and Mrs. Lindsey Bradley
Ms. Gay Brantley
Mr. and Mrs. Jason Braswell
Brave Beginnings
Ms. Ada Brazo
Mr. and Mrs. Norwood M. Brenneke
Mrs. Sonja L. Brewer
Brick Street Pharmacy
Mr. George M. Bridges
Mr. and Mrs. David Bristol
Ms. Stacie L. Brooks
Brookshire Grocery Company
Mr. and Mrs. Britt Brookshire
Brown Bauman & Smith, P.C.
Ms. Bonnie J. Brown
Mrs. Jan S. Brown
Mr. John Brown
Mr. Kenneth W. Browning
Bryant Burton Kupcunas

Architects Inc.
Mr. and Mrs. John F. Bufe
Ms. Edwina S. Bulman
Mr. and Mrs. Scott Burch
Ms. Lisa K. Burkett
Ms. Jennifer K. Burks
Ms. Cathy Burnett
Ms. Donna M. Burnley
Mr. and Mrs. Jim F. Bush, Jr.
Mr. and Mrs. Kris Buth
Mr. and Mrs. John L. Button
Mr. and Mrs. Reagan L. Butts
Mr. Robert M. Byrd
Ms. Bettie J. Bywater
C & M Building Supply
Dr. and Mrs. James A. Caccitolo
Cagle Auto Group
Ms. Mary Nell Cagle
Mr. and Mrs. Robert D. Cain
Ms. Jennifer T. Calamba
Mr. Ramon Camacho
Mr. and Mrs. Leon Cameron
Ms. Stephanie Campbell
Mr. Jason Canchola
Mr. Charles Cannon
Ms. Windy L. Cannon
Ms. Vicki L. Carl
Mr. Joe M. Carr
Mr. and Mrs. Don Carroll
Mr. and Mrs. Charles R. Carswell
Mrs. Melba G. Carter
Mr. Stephen W. Cary
Ms. Rachel Cash
Mr. and Mrs. Thomas A. Castloo
Mrs. Laura Castro
Ms. Erica N. Cauley
Mr. Alexander Cawley
CEFCO Convenience Stores
Ms. Laura Cervantes
Ms. Amber N. Chauncey
Ms. Theresa M. Cheaney
Mr. and Mrs. Craig M. Chesley
Chico's FAS, Inc.
Children's Miracle Network
Mr. and Mrs. Randall V. Childress
Chipotle
CHRISTUS Trinity Mother Frances
Health System Volunteers
Citizens State Bank
Miss Lexie Clark
Mrs. Dorothy Clark
Ms. Haley L. Clark
Ms. Lauren K. Clark
Dr. and Mrs. James O. Claxton
Mr. Mark Clemons

Ms. Lisa M. Cloud
Coca-Cola
Mr. Gary Cochran
Mr. and Mrs. Harold D. Coffey
Dr. Steven J. Cohen and Mrs.
Marjorie A. Ream
Mr. and Mrs. Adam S. Colby
Cole & Co.
Ms. Jennifer R. Cole
Mr. and Mrs. Colby Collier
Ms. Amy Beth Collins
Ms. Yolanda R. Collins
Ms. Annette B. Colorossi
Ms. Samantha B. Comeaux
Complete Nutrition
Mrs. Molly R. Cook
Mr. and Mrs. Patrick A. Cooper
Mrs. L. Anne Cooper
Mr. and Mrs. W. Paul Cooper
Cooperative Teachers Credit Union
Mrs. Laura Corbett
Mr. and Mrs. John A. Corley
Mr. Andrew L. Cornish
Mr. Keith Cornitcher
Mr. Wayne Cosby
Ms. Michelle Costlow
Mr. Gary Countryman
Mr. and Mrs. Larry Coventry
Ms. Amy Cox
Mr. Todd Cox
Mr. Richard Craft
Col. and Mrs. Emery J. Crane (Ret)
Mr. Brent Creacy
Ms. Debra Crocker
Mr. Shawn M. Cross
Ms. Andrea Crow
Crown Motor Company
Mr. and Mrs. Kent R. Crozier
Mr. and Mrs. Tony Cruz
Mr. Dillion M. Crymes
Mr. Hogan Cuny
Custom Care Bracing, L.L.C.
Dairy Queen
Ms. Cheryl Dano
Ms. Carleen Dark
Mrs. Annie L. Davis
Mr. and Mrs. B. Frank Davis, Jr.
Ms. Charlotte L. Davis
Mr. Jeff Davis
Ms. Meoshi P. Davis
Mr. and Mrs. Ron Davis
Mr. and Mrs. Stephen F. Davis
Mr. and Mrs. Robert S. Davis Jr.
Mr. and Mrs. Tom Davis
Mr. William H. Davis

Mr. and Mrs. Thomas C. Deal
Mr. Tyler Deboer
Ms. Jacquelyn S. Decker
Mr. and Mrs. Mike Deer
Deer's Exterminating Service LLC
Mr. and Mrs. Darrell W. Dement
Mr. and Mrs. Todd DeRo
Mrs. Kristy M. Dewbre'
Ms. Claudine B. Dews
Diboll Ace
Mr. Matthew Diliberto
Ms. Ruby Dillard
Mr. Paul Dipaola
Ms. Jacque Dixon
Ms. Leah C. Dixon
Ms. Natasha L. Dixon
Ms. Meredith M. Dodson
Dr. and Mrs. Ronald F. Dodson
Ms. Angie Dorough
Ms. Dee Ann Dorsey
Mr. Roy L. Doty
Double B Express, LLC
Doug Raney Land and Timber
Mr. Clyde A. Dowdle
Mr. and Mrs. Stephen R. Drake
Driven Brands, Maaco, Meineke
Car Care Center
DSM Canister, LLC
Mrs. Bobbi C. Duhon
Mrs. Karen Duke
Mr. and Mrs. Ronald W. Duncan
Mr. and Mrs. Billy M. Dunklin
Ms. Gladys B. Dunn
Mr. Brian Duplechain
Mr. and Mrs. S. Ray Durham
East Texas SECC - 43
Ms. Deborah J. Eckstadt
Mr. Luke Edgemon
Ms. Marcia S. Edwards
Mr. and Mrs. John M. Eiche
Mr. and Mrs. Joe Elliott
Ms. Judith D. Elliott
Mr. and Mrs. John L. Ellison II
Ms. Nell H. Elmore
Mrs. Alisa English
Enviro-Care
Epic
Ms. Erika N. Espinosa
Mr. Alex Eustace
Ms. Debra Evett
Express Employment Professionals
Mr. and Mrs. Allen W. Fair
Mr. and Mrs. Elias D. Fajardo
Mr. and Mrs. Bruce C. Faulkner
Mr. and Mrs. Jose A. Feliciano
Mr. and Mrs. Jose A. Feliciano, Jr.
Mr. and Mrs. John W. Ferguson, Jr.
Mr. and Mrs. Charles A. Fernandes II
Mr. and Mrs. Oran L. Ferrell III
Mr. and Mrs. B. R. Fields, Jr.
Dr. Catherine M. Fieseler
Lt. General Howard M. Fish
Mrs. Celeste D. Fisher
Ms. Ruth C. Fisher
Mr. and Mrs. Bobby D. Fitzgerald
Mr. and Mrs. Matthew Flanery
Mr. and Mrs. Richard Fleet
Major and Mrs. Gailon Fletcher (Ret)
Reverend John F. Flynn
Mrs. Laurie Folse-Rossman
Ms. Brenda Forson
Mr. and Mrs. Michael D. Forsythe
Ms. Roygena L. Fortman
Mr. and Mrs. Don P. Fortner
Mr. and Mrs. Scott Fossey
Mr. and Mrs. Mark Foster
Miss Beverly G. Francis
Mr. D. Vince Frasier
Ms. Cindy Frausto
Dr. and Mrs. Loy W. Frazier Jr.
Mr. Gary W. Frederick
Fred's Inc.
Ms. Jennifer A. Freeman
Dr. and Mrs. Gregory Freimer
Mr. and Mrs. Dennis W. Frey
Mr. and Mrs. Larry D. Frowick
Ms. Jamie L. Funderburk
Mr. and Mrs. Wilford V. Gabbard
Ms. Jessica R. Gamble
Mr. J. David Gano
Mr. and Mrs. John T. Gaston
Mr. and Mrs. Dean C. Gatlin
Mr. and Mrs. Kirk Gautier
General Mills
Ms. Melissa K. George
Mr. and Mrs. Doug Gholson
Ms. Dede Gibson
Mr. and Mrs. Terry Giles
Mr. Bennie Gillaspie
Ms. Christine K. Gish
Mr. and Mrs. Bob Glass
Mr. and Mrs. J. Christopher Glenney
Ms. Edie L. Gobert
Mrs. Maegan E. Goff
Gold 'N Visions, LTD
Gold Rush
Ms. Ysidonia C. Gonzales
Ms. Laree A. Gonzalez
Mr. and Mrs. Goodnight
Mr. W. Michael Goodson, Jr.
Mr. and Mrs. Guy Goodwin
Ms. Monique Gordon
Gordon Mosley - Attorney at Law
Mr. and Mrs. Rick Gordon
Mr. Thomas M. Gordon, Jr.
Mr. William Gordon
Mr. and Mrs. Calvin Gould
Ms. LaDawn Gour
Mr. and Mrs. Robert R. Graham
Ms. Kamie Grantham
Ms. Renee Gray, NNP-C and
Mr. John Murphy
Ms. Lou A. Green
Ms. Marjorie Green
Ms. Sandy R. Green
Mrs. Mildred H. Grinstead
Mrs. Lorie M. Grisham
Mrs. Shirley H. Guillory
Mr. and Mrs. Wayne K. Guinn
Dr. and Mrs. Kyle L. Gully
Mr. and Mrs. Joseph J. Guzzetta, Jr.
Ms. A. Kay Haag
Mr. Gary Haag
Mr. and Mrs. Fred J. Haberle
Ms. Avery Hager
Ms. Betty Haisten
Ms. Deanna Hamilton
Mr. and Mrs. Glen T. Hamilton
Mr. and Mrs. Raymond D. Hamilton
Hamilton Timber Company
Ms. Suzanne G. Hamm
Ms. Shannon Hammond
Ms. Lisa D. Hanes
Ms. Patricia A. Hanna
Ms. Holly J. Hannie
Mr. and Mrs. Hans V. Hansen
Mr. Ralph W. Hardeman
Hardin Ace Hardware
Ms. Sharon Hardy
Dr. and Mrs. Thomas A. Hargrove
Ms. Mary B. Harp
Mr. Mike Harris
Ms. Tammy W. Harrold
Ms. Aubrey Harry
Mr. and Mrs. C. Webb Harvey
Mr. and Mrs. Paul Harvey
Mr. Vernon Havis
Mrs. Jennifer L. Hawkins
Mr. and Mrs. James H. Hayden
Mr. N. W. Hays
Ms. Tara Hays
Ms. Ann Head
Ms. Donna Headley
Mr. and Mrs. Timothy A. Hegwood
Mr. Steve P. Hellmuth and
Ms. Linda Rudd
Mr. and Mrs. Bill Hendrix
Ms. Allison Hennigan
Mr. Steven D. Henry
Mr. Erick Hensley
Ms. Melynda Hensley
Mr. Shelby C. Herber
Mr. J. H. Herlocker III
Ms. Edna M. Hester
HGR General Contractors L.P.
Mr. and Mrs. Billy E. Hibbs, Jr.
Ms. Jan Hicks
Mr. and Mrs. Don Hightower
Mrs. Denee P. Hill
Mr. Jeffrey M. Hill
Ms. Mildred B. Hill
Mrs. Margaret A. Hilliard
Mr. and Mrs. Michael G. Hines
Mr. and Mrs. Scott Hines
Mr. and Mrs. Michael C. Hinson
Ms. Joselynn L. Hinton
Ms. Ruby F. Hinton
Mr. and Mrs. Michael K. Hogan
Mr. and Mrs. Michael R. Holbrook
Ms. Amy Holden
Mr. Stan Holden
Mr. George T. Holland
Mr. John T. Holland
Mr. Joshua D. Holland
Ms. Vivian J. Hollingsworth
Mrs. Martha B. Hook
Mr. Justin S. Hooper
Mr. and Mrs. V. Ed Hooten
Mr. and Mrs. Kenneth W. Hooton
Mr. and Mrs. William L. Hopper
Ms. Deanna M. Hornbuckle
Ms. Alice M. Horne
Mrs. and Mrs. James T. Hortman, Jr.
Mrs. Barbara W. Horton
Hospitality Health ER - Longview
Ms. Robyn Howell
Mr. and Mrs. Lloyd F. Howerton
Ms. Margaret D. Hudson
Ms. Sarah Huff
Ms. Hampton Hughey
Ms. Jennifer L. Hugo
Ms. Leota Humphrey
Ms. Madeline Humphrey
Mr. and Mrs. Jeff G. Hyde
Hydra Tattoo Company
Imagine Nation Books, LTD. DBA
Books are Fun
Ms. Shirley Inselman
Ironman Enterprises
Ms. Theresa Irons
Mr. and Mrs. Alan R. Jackson
Mr. and Mrs. Austin R. Jackson
Mr. Jack A. Jackson
Jacob Putman Campaign
JAMCAT Sound & Reception
Mr. and Mrs. Bryan Jeanes
Mr. Van Jeter
Joe Lee Construction
Mr. and Mrs. Boyce Johnson
Mrs. Cynthia A. Johnson
Ms. Tomaka Johnson
Mr. and Mrs. Tony J. Johnson
Ms. Anna Johnston
Mr. and Mrs. Jeffrey Jon
Mrs. Jennifer K. Jones
Mrs. Judy Jones
Reverend and Mrs. L. A. Jones
Mr. and Mrs. Steven Jones
Ms. Sheila A. Jones
Mr. Terry S. Jones
Mrs. Susan A. Joslin
Ms. Vickie Joslin
Mrs. Howard L. Jowers
Ms. Shelley A. Judge
Mrs. Lynne A. Justice
Mr. and Mrs. James E. Kear
Ms. Haley Kee
Kelly Community Federal
Credit Union
Mrs. Neta Kemp
Miss Tammy Kendrick
Mr. James A. Kennerly
Dr. Jennifer M. and Mr. Jarad Kent
Ms. J. Marie Kerry
Dr. and Mrs. Steven P. Keuer
Mr. and Mrs. William O. Key
Ms. Misty M. Kimbrough
Ms. Jameka King
Ms. Jesi Nirole Kinsey
Ms. Martha M. Kirby
Ms. Sundi Y. Kissingner
Mr. Logan Klouda
Mr. and Mrs. Ben F. Koonce
Mr. and Mrs. Rob Korenek
Ms. Jennifer Kramer
Kroger Company
Mr. and Mrs. Paul Krutza
Ms. Robin Krzesienski
Ms. Beatrice Kubvaruno
La Invasora - KOYE 96.7
Ms. Shauna G. Lambeth
Mrs. Cindy C. LaPrade
Mr. and Mrs. Bart B. LaRocca
Larry's Interiors Inc.
Rhashamekia J. Law
Mr. and Mrs. William G. Law
Ms. Kenda Leavine
Ms. Sharon Leavine
Ms. Melissa LeBlanc
Mrs. Geniece R. Lee
Mr. and Mrs. Kyle Lee
Ms. Christine M. Legler
Ms. Megan L. Leinback
Ms. Tara T. Lemmel
LeTourneau Federal Credit Union
Ms. Marilyn Lewis
Mr. and Mrs. Jerry A. Lewis
Ms. Kelly Lile

CMNH DONORS 7.1.17 – 6.30.18

Mrs. Annette E. Lilly
 Mr. and Mrs. Roy H. Lilly
 Dr. and Mrs. Sauyu Lin
 Mr. and Mrs. Orval Lindsey
 Mr. Matthew R. Link
 Little Dribblers of Mineola
 Mr. and Mrs. Stephen J. Lockhart
 Ms. Mary T. Loftis
 Ms. Carine Logan
 Ms. and Mr. Shelly R. Lollar
 Mr. and Mrs. Mack Long
 Mr. and Mrs. Frank Lookadoo
 Ms. India Loth
 Love's Travel Stop & Country Stores
 Mrs. Yvonne K. Loving
 Ms. Elizabeth R. Lowe
 Ms. Terry L. Maddox
 Mr. Scott Madonado
 Mr. and Mrs. Michael E. Mahfood
 Mr. and Mrs. James L. Mallory
 Mr. and Mrs. S. Pat Malone
 Ms. Elisabeth Manjarrez
 Mr. and Mrs. Jason A. Markham
 Ms. Christie L. Marlow
 Marriott International, Inc.
 Ms. Glenda T. Martin
 Mr. Michael D. Martin
 Mr. Paul Martin
 Mr. Aaron D. Martinez
 Ms. Ivonne Martinez
 Ms. Sasha S. Martinez
 Ms. Megan Massengale
 Mr. and Mrs. Chris Massey
 Mr. James Mathis
 Ms. Roxann Matthews
 Mr. and Mrs. Steve Mayfield
 Ms. Bonnie Maywhort
 Mrs. Fonda P. McBride
 Ms. Rachel V. McBride
 Mr. and Mrs. Brian K. McCabe
 Mr. and Mrs. H. Wayne McCarley
 Mr. and Mrs. David McCaskill, PA-C
 Ms. C. Dee McComic
 Mr. J. Wyley McCoy
 Ms. Andraea McDonald
 Ms. Hanna McDonald
 Ms. Holly McFarlin
 Mr. and Mrs. Edgar L. McGee
 Ms. Yolonda McGowen
 Mrs. Susan McGuire
 Ms. Ashley W. McIntyre
 Ms. Mary A. McKenzie
 Ms. Vivian A. McKenzie
 Ms. Margaret B. McKibben
 Mr. Daniel McMichael
 Ms. Jane McMillan
 Mrs. Sabine McNair
 Mr. and Mrs. John E. Means
 Medical Plaza Pharmacy
 Ms. Elizabeth V. Medina
 Ms. Sheri Mehaffey
 Mr. Joseph A. Mele
 Ms. Laverne Mell
 Mr. and Mrs. Doyle E. Melton
 Ms. Shaina L. Melton
 Mr. John E. Mendoza
 Mr. John F. Merrill
 Ms. Nicole Merritt
 Metroflex Gym
 Ms. Kati N. Metzger
 Ms. Berenda A. Mewborn
 Mr. Marc Meyers
 Ms. Jamie A. Milham
 Mr. and Mrs. Kevin H. Miller
 Mr. and Mrs. Marlon W. Miller
 Miller-Coors
 Dr. Monique R. Mills
 Ms. Sarah Mills
 Mr. and Mrs. John E. Milner
 Mineola Ace Hardware
 Mineola Community Bank
 Mineola Kiwanis Club
 Mineola Packing Co., Inc.
 Mr. and Mrs. Richard Minyard
 Miss America Organization
 Mr. and Mrs. Paul M. Misso
 Mr. and Mrs. Larry C. Mitchell
 Mr. and Mrs. G. David Mohr
 Mr. James F. Montes
 Mr. Billy L. Montgomery
 Ms. Kylie Montgomery
 Ms. Gay H. Moon
 Ms. Carol F. Moore
 Mr. and Mrs. Jason Moore
 Ms. Melissa M. Moore
 Dr. Brenda and Mr. Jim Morris
 Mr. and Mrs. Michael Morrison
 Ms. Mitzi L. Moss
 Ms. Cynthia L. Mrdjenovich
 Mt. Sylvan Baptist Church
 Ms. Samantha K. Mullens
 Mr. and Mrs. Simon Munoz
 Ms. April D. Murphy
 Murphy-Payne Charitable Trust
 Ms. Mary Mustarde
 Mr. and Mrs. Steve Myrick
 Mr. William M. Naleid
 Dr. and Mrs. Fadi Nasrallah
 Mr. and Mrs. Andy Navarro
 Mr. and Mrs. Bryan Neal
 Ms. Jackie S. Neault
 Mr. John D. Neddo
 Ms. Janie B. Neely
 Mr. and Mrs. David P. Neidlinger
 Mr. and Mrs. Brad Newberry
 Ms. Kirsten A. Nickel
 Ms. Patricia Norman
 Mr. and Mrs. Ricky Norman
 Mr. and Mrs. Jane B. Noteware
 Mr. Melvin R. Nutt
 Ms. Yolanda Nymandi-Nebinsem
 Mr. and Mrs. Michael O'Brien
 Mr. and Mrs. T. Michael Ogg, Sr.
 Mr. and Mrs. Michael Ogg, Jr.
 Ms. Judith E. Oglesby
 Mr. Bennett A. Oguebu
 Mr. and Mrs. Brad O'Leary
 Mrs. Sara L. Oltmann
 Dr. and Mrs. David C. Osteen
 Mr. Danny W. Ouimet
 Ms. Nicole Overby
 Mr. and Mrs. Jeffrey O. Owen
 Ms. Amber Owens
 Mrs. Jan Owens
 Panda Restaurant Group, Inc.
 Mr. Bobby J. Parker
 Ms. Sara Patteson
 Mr. and Mrs. Kyle Payne
 Paypal Charitable Giving Fund
 Mr. Adam Peck
 Mr. and Mrs. Gerald B. Peddy
 Peek-A-Bootique
 Mr. Burlie Peiser
 Pelton Solutions LLC
 Ms. Amelda Penn
 Ms. Dana Perez
 Mr. and Mrs. Jose L. Perez
 Ms. Angela L. Perkins
 Ms. Kathleen P. Perrin
 Mr. Heath R. Perry
 Ms. Karen Perry
 Mr. and Mrs. Robert R. Pettit
 Mr. and Mrs. Grant Peveto
 Mr. and Mrs. Robert S. Peveto, Jr.
 Ms. Brandi L. Phillips
 Ms. Margie Phillips
 Mr. and Mrs. Todd Phillips
 Ms. Anne E. Pileggi
 Mr. and Mrs. Richard A. Pinto
 Dr. and Mrs. Paul W. Pitts
 Ms. Terri D. Pogue
 Mr. and Mrs. Billy Jim Pollard
 Ms. Karen E. Pollard
 Mr. and Mrs. Larry E. Pollard
 Pollard United Methodist
 Mr. and Mrs. Colin Pope
 Mr. Daniel Portillo
 Mr. Michael R. Powell
 Mr. J. M. Powers
 Mr. Daryl P. Pritchard
 Ms. Mary C. Pruett
 Mr. and Mrs. Bill Pulliam
 Dr. Nancy L. Pusser and
 Mr. Timothy C. Sherwood
 Ms. Loretta Pyle
 Quarter-Vend, LLC
 Ms. Penny Quinn
 Raising Canes Restaurants, LLC
 Mr. and Mrs. Terrance M. Ramm
 Mr. and Mrs. Steven Ramsey
 Ms. Jessica Raney
 Ms. Joanna R. Rankin
 Ms. Karen Rasco
 Mr. James K. Razor
 Mr. Brian Raymakers
 Re/Max First Choice
 Mr. and Mrs. Jude W. Read
 Red Bull
 Mr. and Mrs. John D. Redfern
 Ms. Wendy Reed
 Mr. Zachary Reed
 Mr. and Mrs. Wendell J. Rehm
 Ms. Jessica M. Reigstad
 Dr. Margaret R. Reitmeyer
 Mr. K. Leon Renfroe
 Mr. and Mrs. Curtis Reynolds
 Mr. and Mrs. Randy Reynolds
 Ms. Tracey L. Reynolds
 Ms. Shirley A. Rhinehart
 Ms. Deena Ricard
 Ms. Denise M. Richardson
 Mr. and Mrs. J. D. Richardson, Jr.
 Mr. and Mrs. Larry Richey
 Ms. Stephanie J. Riley
 Mr. and Mrs. David L. Ringgold
 Mrs. Annette I. Rios
 Ms. Jill F. Roach
 Robbins Energy LLC
 Ms. Linda P. Robert
 Mr. and Mrs. Dick Roberts
 Ms. Bridget Robertson
 Ms. Tabitha A. Robertson
 Mr. Brady H. Robinson
 Ms. Cari Robinson
 Mr. and Mrs. Troy M. Robinson
 Ms. Lisa R. Robinson
 Mr. Randy Rodrigues
 Ms. Adriana Rodriguez
 Ms. Kristine Roesch
 Dr. and Mrs. James R. Rogers
 Mr. and Mrs. Homer Rogers, Jr.
 Ms. Claudia Rojas
 Ms. Cathie L. Rolf
 Ms. Ethel V. Rollins
 Mr. and Mrs. Steve Roosth
 Rose City Kiwanis Club of Tyler
 Mr. and Mrs. Alan Roseman
 Mr. and Mrs. James B. Ross
 Mr. and Mrs. J. Matt Rowan
 Dr. and Mrs. Mike Rowan, Jr.
 Mr. and Mrs. Mike Rowan
 Ms. Terri Rowden
 Ms. Shirley C. Rowe
 Ms. Jeanne S. Rozelle
 Ms. Patti M. Rucker
 Ms. Lori M. Rumbelow
 Ms. Lynn Russell
 Mr. and Mrs. D. K. Rutherford
 Dr. and Mrs. James F. Ryder
 Mr. and Mrs. Rick E. Sage
 Saleh Family Foundation
 Sam R. Hill Lumber
 Ms. Anitha Sanderson
 Mr. Aaron Santellan
 Ms. Sandra K. Schafer, CPC
 Ms. Leslie H. Scheer
 Mr. and Mrs. Thomas R. Scholler, PA
 Ms. Kitty E. Schreengost
 Ms. Michelle C. Scott
 Security's Lending Hand Foundation
 Mr. Kevin M. Seitz
 Ms. Dora L. Session
 Ms. Mande Shacklee
 Ms. Kay Sharp
 Ms. Sylvia R. Shaver
 Mr. Paul Shaw
 Mr. Justin E. Shelton
 Ms. Melissa K. Shelton
 Mr. and Mrs. R. Walton Shelton
 Ms. Connie Shields
 Ms. Nelda W. Shipp
 Mrs. Barbara Y. Shtofman
 Mr. and Mrs. Collin C. Shull
 Mrs. Nicolette J. Silverio
 Ms. Elizabeth Simmons
 Mr. and Mrs. Paul M. Simmons
 Ms. Melissa Singletary
 Mr. James D. Skinner
 Mr. and Mrs. Matthew D. Skinner
 Slayton Construction LLC
 Ms. Almarie C. Smith
 Dr. and Mrs. H. D. Smith

Ms. Cindy Smith
Mr. Richard Smith
Mr. and Mrs. Roger D. Smith
Dr. and Mrs. Roy R. Smith
Ms. Ruth Ann Smith
Dr. and Mrs. Scott Smith
Ms. Suzie Smith
Mr. Willie T. Smith
Mr. and Mrs. Jonathan S. Snyder
Ms. Amanda K. Soape
Mr. and Mrs. Richard M. Son
Sons of the American Legion -
Squadron 12
Mr. and Mrs. Charles L. Sorrells
Ms. Melissa Soto
Mr. and Mrs. John E. Soules, Jr.
Mr. Ryan Southall
Southwestern Cleaning Service
Mr. and Mrs. David R. Spears
Mr. James E. Speier, Jr.
Mr. and Mrs. Christopher S. Spence
Mr. and Mrs. Jackie Spencer
Mr. and Mrs. Arnold R. Spiers
Ms. Penny L. Spivey
Ms. Ashley Springs
Mr. Christopher Stamm
Mr. and Mrs. Monty Stanley
Mr. and Mrs. Charles L. Starks
Ms. Lisa C. Starnes
Steamatic of East Texas, Inc.
Ms. Patty Steelman
Mrs. Susan Rae Stefanek
Stephen F. Austin State University
Mrs. Penny Stephens
Ms. Kristi Stern
Mr. and Mrs. J. M. Sterritt
Mr. and Mrs. Michael T. Stiles
Ms. Lauren Stoltz
Bishop Joseph E. Strickland
Ms. Shelly D. Strickland
Ms. Sydney N. Strickland
Stripes Convenience Stores
Mr. and Mrs. Robert J. Strong
Ms. Carolyn S. Stroud
Dr. and Mrs. Kent Stucky
Mr. and Mrs. R. Lance Sturrock
Mr. Austin Sudduth
Mr. and Mrs. J. Cris Sukiennik
Mr. and Mrs. Tommy T. Sukiennik

Mr. Calvin Sumner
Ms. Danita Sumner
Mrs. Terri Sumpter
Dr. and Mrs. Nicholas Andrade
Mrs. Elizabeth Sutton
Mr. and Mrs. Elam F. Swann III
Mr. and Mrs. Freddie Swoape
Ms. R. Renee Tannery
Mrs. Mary Anne L. Tarrant
Ms. Holli Tate
Mr. J. Bruce Tate
Mr. and Mrs. John C. Tate
Mr. and Mrs. Jerry S. Taylor
Mrs. Melissa G. Taylor
Mr. and Mrs. Charles J. Taylor
Ms. Tracy Taylor
Ms. Wanda Jo Taylor
Mr. and Mrs. Matt Tefteller
Telco Plus Credit Union
Ms. Sandra I. Terrazas
Texas Bank and Trust
Texas National Bank
Texas Oncology - Tyler
Mr. Stan Tharp
The Louis & Peaches Owen
Family Foundation
The University of Texas at Tyler
Ms. Frankie W. Thomas
Ms. Megan Thomasch
Mr. and Mrs. Brian L. Thompson
Mr. and Mrs. Larry D. Thompson, Jr.
Mrs. Marilyn M. Thompson
Ms. Olivia Thompson
Mrs. Cheryl Threlkeld
Mr. W. Adam Thurman
Ms. Heather Tiller
Mr. and Mrs. Joe Tincher
Ms. Pat Tippitt
Mr. George Toone
Tower Top Solutions
Ms. Hannah Tracy
Mr. and Mrs. Mike Treadway
Mr. and Mrs. Marshall C. Treadwell
Treat Training, LLC
Mr. Michael A. Tresca
Ms. Geneviene Trevino Jordan
Ms. Destony Troy
Ms. Leah Troyer
Mr. and Mrs. Herbert R. True

Ms. Tiffany Tupont
Ms. Glenda Turner
Mrs. Jessica M. Turner
Mr. and Mrs. Richard L. Tuz
Tyler Area Builders Association
Ms. Gwendolyn S. Tyler
Tyler ISD
Ms. Maureen Tyler
Tyler Roofing Company
Tyler Tabernacle UPC
Mr. and Mrs. Aaron J. Uncapher
United Credit Union
United Networks of America
United Way of Tyler/Smith County
Valvoline Instant Oil Change
Ms. Roslyn D. Van Winkle
Vance Oilfield Services Inc.
Mr. Juan P. Vanegas
Mr. and Mrs. Joe W. Vann
Mr. and Mrs. Andrew von Eschenbach
Waco Scottish Rite
Charitable Foundation
Ms. Dana Wade
Mr. and Mrs. Kenneth S. Waits
Walmart
Mr. and Mrs. Kevin W. Walsh
Ms. Dedra E. Walters
Ms. Tracie Warburton
Mr. and Mrs. Bernard H. Ward, Jr.
Ms. Mary L. Ward
Mr. and Mrs. Charles W. Warren
Mr. and Mrs. Don P. Warren
Mr. and Mrs. Tommy E. Warren
Mrs. Cheryl L. Way
Ms. Kelli D. Waymire
WC Restaurant Enterprises, LLC
Ms. Kelly R. Weisinger
Mr. J. D. Weldon
Welling Enterprises, Inc.
Mr. and Mrs. Waymon Wesley
Mr. and Mrs. Monty L. Whetstone
Mrs. Tina G. Whiddon
Mrs. Gloria G. White
Ms. Lisa H. White
Ms. Mary Jo Whitehead
Mrs. Beverly Whitham
Mr. and Mrs. Donald M. Whitmer
Dr. and Mrs. Clayton E. Whitney
Mr. and Mrs. Brad Wilburn

Mrs. Amy D. Wiley
Ms. Shannon Wilks
Mr. and Mrs. John P. Williams
Mr. Patrick Williams
Ms. Shelley Williams
Ms. Tamira L. Williams
Mr. and Mrs. Todd C. Williams
Mrs. Vickie R. Williams
Mr. Christopher D. Willis
Willis Morrison State Farm
Mr. Patrick D. Willis
Ms. Samantha Willson
Mr. Brandon Wilson
Mr. Darrell D. Wilson
Mr. Ronald E. Wilson
Ms. Shirley Wilson
Mr. and Mrs. David W. Wilson
Mr. and Mrs. Walter R. Wilson
Mr. Porter Wincuina
Mrs. Melissa Windham
Ms. Gerane Winningham
Amy and Tom Woldert Donor
Advised Fund at East Texas
Communities Foundation
Mr. and Mrs. Sam L. Wolf
Mrs. Wendi Wolfe
Mr. Carroll J. Wood
Wood County Electric Cooperative
Wood County Farm Bureau -
Mineola
Wood County Farm Bureau -
Quitman
Mr. and Mrs. Ray Wood
Mrs. Vickie S. Wood
Mrs. Vida J. Wooten
Mr. Jeffrey Wright
Wright Phillips & Company
WRL General Contractors LTD
Mr. and Mrs. William J. Wyatt
Mrs. Jamie-Crystal L. Wylie
Dr. Pochin and Mr. Sheng Yin
York Rite Masonic Charitable Trust
Mr. and Mrs. Donald G. Young
Mr. and Mrs. Michael C. Young
Mrs. Sabrina L. Young
Ms. Patricia H. Zips
Mr. and Mrs. Jim Zucca

Save the date!

Please join us for the 7th annual

Miracles begin with YOU!

Thursday | January 31, 2019 | 5:30 – 7:30 p.m.

Willow Brook Country Club | Tyler

903.606.5437 | christustmf.org/cmn



A Toast to East Texas 2018

A. E. Shull & Company
Drs. Elizabeth and Nick Andrade
Anonymous
Mr. and Mrs. Don L. Arnwine
Austin Bank
Mr. and Mrs. David Bates
Mr. and Mrs. Trevor Bates
Drs. Virginia and Charles Beall
Dr. and Mrs. Todd Bengtson
BlackRock Financial
Management, Inc./Merrill Lynch
Bob L. Herd Foundation
Mr. and Mrs. Lindsey Bradley
Mr. and Mrs. Steve Bratteli
Mr. and Mrs. B. Tim Brookshire
Mrs. Carrie W. Brookshire
Mr. and Mrs. Tom Brown
Dr. and Mrs. Jonathan Thomas Brown
Mr. and Mrs. Fred Bunker
Mr. and Mrs. Matt Carpenter
Dr. Krystal and Mr. Nicholas Castle
Mr. and Mrs. Darrell Chase
Mr. and Mrs. Randall V. Childress
CHRISTUS Trinity Mother
Frances Health System
CHRISTUS Trinity Mother
Frances Health System
Volunteers
Citizens 1st Bank
Citizens National Bank
Mr. and Mrs. Jim Clark
Mr. and Mrs. David Colella
Mr. and Mrs. Steve Conaway
Mrs. Julia Coody
Mr. and Mrs. W. Paul Cooper
Ms Summer Mears and
Mr. Luis Correa
Dr. and Mrs. J. Stuart Crutchfield
Mr. and Mrs. Robert C. Curtis
Dr. and Mrs. Kenneth D. Cushman
Mr. and Mrs. Gregg Davis
Mr. and Mrs. Patrick Deen
Mrs. Linda R. Denson

Dr. Rachel and Mr. Matthew DeVaney
Mr. and Mrs. Ken Dietz
Mr. and Mrs. S. Ray Durham
Mr. and Mrs. Clay Eiland
Mr. and Mrs. Jim Ellis
Ms. Karen Enright
Epic
Mr. and Mrs. Andrew
von Eschenbach
The R.W. Fair Foundation
Mr. and Mrs. Bruce Faulkner
Mr. and Mrs. Scott Fossey
Mr. and Mrs. Stan Frank
Mr. and Mrs. John Fry
GG Distributing LLC
Ms. Melissa Giffin
Mr. and Mrs. J. Christopher Glenney
Mrs. Jacque Goates
Mr. and Mrs. Jeffrey L. Haas
Mr. and Mrs. Fred J. Haberle
Mr. and Mrs. Steve Hardy
Mr. Jessie L. Haynes
Ms. Linda Rudd and
Mr. Steve P. Hellmuth
Mrs. Martha B. Hook
Mr. and Mrs. Chris Hudnall
Ingersoll Rand
Mr. and Mrs. Robert B. Irwin
Dr. and Mrs. C. Noah Israel
Mr. and Mrs. Alan R. Jackson
Dr. Carolyn G. and Mr. Chris Jenks
Mrs. Debbie Johnson
Mr. and Mrs. Robert Johnson
Mr. David M. Jarvis and
Ms. Allison A. Kay
Mr. and Mrs. Matthew Laine
Mr. and Mrs. Harry Leatherwood
Dr. Julie Philley and
Mr. Richard Lee
Mrs. Claire Leifer
LMT Wealth Management
Group - Merrill Lynch
Mr. and Mrs. Barry Lofquist

Mr. and Mrs. Bill Lust
Mr. and Mrs. Michael Mahfood
Mr. and Mrs. James L. Mallory
Mr. and Mrs. Ben Y. March
Mr. and Mrs. John Martin
Mr. and Mrs. Reid Martin
Mr. and Mrs. Jim Mazzu
Dr. and Mrs. James D. McAndrew
Mr. and Mrs. Brent McCauley
Mrs. Leigh McClendon
Dr. and Mrs. Robert McKinney
Mr. and Mrs. Jamal Moharer
Dr. and Mrs. Fadi Nasrallah
Mr. and Mrs. Andy Navarro
Mr. and Mrs. Mark Nelson
Dr. and Mrs. Michael J. Norton
Dr. Brett R. Noteware
Mr. and Mrs. Danny Noteware
Mrs. Bonnie Palmer
Mrs. Bonnie C. Palmer
James I. Perkins
Family Foundation
Peveto & Associates, Inc.
Mr. and Mrs. Todd Phillips
Mr. and Mrs. Jason J. Proctor
Mr. and Mrs. Bill Pulliam
R & K Distributors, Inc.
Mr. and Mrs. Rick Rayford
Mr. Julian Rayzor
Mr. and Mrs. Richard R. Redman
Regions Bank Tyler/
Mr. Chad Cargile
Dr. Margaret R. Reitmeyer
Mr. and Mrs. James Reed Rippey
Mr. and Mrs. Jason Romano
Mr. and Mrs. Mike Rowan
Mr. and Mrs. George O. Rowe
Ms. Cindy B. Rudd-Stritchfield
Saleh Family Foundation
Dr. and Mrs. C. Fagg Sanford
Mr. and Mrs. Will Shelton
Dr. Hope and Mr. John Short
Mr. and Mrs. Collin Shull

The Honorable and
Mrs. Jack Skeen, Jr.
Mr. and Mrs. Mackey Smith
Mr. and Mrs. John Soules, Jr.
Southside Bank
Mr. and Mrs. Jerry J. Spencer
State Farm Companies Foundation
Mr. and Mrs. Jay Stenklyft
Bishop Joseph Strickland
Mrs. Elizabeth Sutton
Texas Bank and Trust
Texas Oncology - Tyler
The Genecov Group, Inc.
Mr. and Mrs. Craig E. Thomasson
Mrs. Marilyn M. Thompson
Mr. Kenneth W. Threlkeld
Mrs. Linda Toney
Mrs. Allison Tuseth
Tyler Junior College
Mr. and Mrs. Kevin W. Walsh
Mr. and Mrs. Robert Wells
Mr. and Mrs. John B. White
Dr. and Mrs. Clayton E. Whitney
Mr. and Mrs. Thomas A. Wilken
Mr. and Mrs. John P. Williams
Mr. and Mrs. Robert H. Wilson
Watson W. Wise Foundation
Ms. Carol Zwan and
Mr. Don McClellan
Mrs. Eva Denson
Mr. and Mrs. Wayne Rauh



Associate CAMPAIGN

Share The Spirit 2018

Cynthia M. Aarant
Ignacio N. Acevedo
Amanda R. Adams
Darla K. Adams
Karen A. Adams
Sheila G. Adams
Christian Agapito
Shawn K. Alberti
Christina Aldridge
Heather D. Alexander
Teri D. Allen
Jaime D. Alvarez
Andrea R. Anderson
Angela L. Anderson
Gwenda A. Anderson
Mercedes L. Anderson
Richard L. Anderson
Mike Andrews
Anonymous
Jo N. Appleton
Dunn Arante
Alma B. Arenivas
Jennifer L. Armstrong
Rebekkah L. Armstrong
Drunita F. Arps
Lance M. Atkinson
Elizabeth J. Ausburn
Pamela S. Austin
Evelyn F. Badillo
Kelly A. Baggett
Brian J. Bailey
Robert E. Bailiff
Melvin L. Baldrige, Jr.
Terry B. Ball
Alisa Barber
Sofia R. Barbosa
Patti A. Barichello
Keela R. Barker
Alisha C. Barron Clark
Angela L. Bass
Kourtney R. Bass
Rhonda L. Beaird
Aaron C. Beal
Princess D. Beal
Victoria E. Beall
Julie A. Beam
Melissa A. Bearden
David Beasley
James A. Beasley
Jason C. Beaton
Yvonne M. Beaton
Elizabeth P. Bell
Robin C. Bendall
Jeffrey S. Bennett
Tracey A. Bennett
Patricia L. Bergh
Toni C. Berry
Ronna M. Best
Rebecca A. Beu

Robert W. Bienert
Kamie L. Bishop
Melissa A. Black
Julie A. Blakeley
Virginia P. Blalock
Codie L. Blaser
Shulanda Blunt
Kimberly D. Bobbitt
Star D. Boggs
Karla S. Boles
Brooklyne R. Bond
Peter A. Borke
Diane C. Bottoms
Ferdinand J. Boutin
Elizabeth E. Bowers
Ethel L. Bowie
Jo Ann Bowie
Shelli E. Boyd
Jessica L. Boykin
Melissa D. Bradford
Mandy K. Bradshaw
Natalie M. Bradshaw
Susan M. Brewer
Angela D. Bright
Kenneth D. Britton
Robert L. Brooks
Stacie L. Brooks
Jennifer L. Broome
Bonnie J. Brown
Casey R. Brown
Debra L. Brown
Kimberly D. Brown
Michelle L. Brown
Rose K. Brown
Saundra Brown
Tandra M. Bryner
Patricia A. Bullard
Kerri D. Burgess
Christine M. Burist
Lisa K. Burkett
Jennifer M. Burleson
Donna M. Burnley
Sheldon Burquist
Richard T. Burrow
Jim F. Bush, Jr.
Laci M. Butler
Rhonda Butler
Debra A. Caldwell
Jerry L. Calender
Aaron K. Calhoun
D. Ross Campbell
Gary D. Campbell
Robert H. Campbell IV
Lauren N. Canady
Windy L. Cannon
Marilyn B. Cantero
Vicki L. Carr
Jacob R. Carrasco
Anthony E. Carrig

Sheryl L. Carter
Charlene K. Carver
Heather L. Carver
Laurel A. Case
Mary J. Cassidy
Connie H. Catalani
Erica N. Cauley
Elizabeth M. Causey
Karen R. Chambers
Cynthia D. Chapman
Mischele D. Chapman
Amber N. Chauncey
Theresa M. Cheaney
Earl L. Cheney
Christin Chifwepa
Sherri L. Chumbley
Dawn P. Clark
Haley L. Clark
M. Fran Cleaver
Christi B. Cliborn
Pam J. Clifton
Lisa M. Cloud
Austin W. Clowers
Angela D. Coats
Sharon D. Cobb
Homer L. Cole
Jennifer R. Cole
Chelsea Collier
Amy Beth Collins
Jennifer R. Collins
Annette B. Colorossi
Shirley T. Combs
Constance B. Cook
Eben G. Cook
Michelle L. Cook, NP
Susan R. Cooper
Mary T. Copeland
Dana A. Cornett
Andrew L. Cornish
Jennifer Cortez
Richard A. Covell
Traci N. Crane
Cantrina L. Crawford
Ines D. Crawford
Theresa Crawford
Stormie R. Crouch
Deborah F. Crowder
Janice C. Crowder
CeCelia A. Cruz
Denise E. Cruz
Tina E. Crymes
Daniel L. Culpepper
Kimberly J. Dailey
Rebecca E. Daniels
Ashlie A. Davis
Beverly A. Davis
Carrollyne C. Davis
Jennifer D. Davis
Sheila J. Davis

Thelma J. Davis
Burnetta C. Day
Robert G. Day
Kayla R. Decker
Brandi J. Dees
Geertje DeJong
Tori A. Dement
Todd DeRoo
Yolanda Deven
Kristy M. Dewbre'
Angelicia G. Dews
Coleen Dews
Roderick A. Deyon, Sr.
Annamari F.
Dietrichson
Sandra R. Dimas
David Dixon
Eneireida T. Dixon
Leah C. Dixon
Drema L. Domain
Dee Ann Dorsey
Linda J. Dotson
Sara R. Douglas
Rickey D. Downey
Terri C. Downey
Michael A. Driehurst
Shelby E. Dudley
Shanna S. Duke
Natalie K. Duncan
Patricia L. Dunklin
Juanita E. Duran
Sherri J. Durham
D. Kathlene Dyer
Barbara J. Eads
Mike Eckhard
Walter C. Ellis
Hearthly L. Emerick
Reverend Allan Escobar
Veronica Esparza
Elias D. Fajardo
Tonya G. Faulkner
Davon H. Ferguson
Theresa A. Fernandez
Dania K. Fields
Paul A. Fike
Deanna H. Finn
Lisa M. Fleming
Robbie D. Folker
Comilla W. Ford
Megan D. Ford
Sarah P. Forester
Misty K. Fortunatas
Scott Fossey
Diann S. Fountain
Beverly G. Francis
Demetria Franklin
Sherry D. Franklin
Nelly S. Franks
D. Vince Frasier

Jennifer A. Freeman
Kathryn E. Freeman
Carmen Frias
Jennifer W. Fritz
Lisa K. Frowick
Jamie L. Funderburk
Susan M. Galindo
Bonita W. Galloway
Christine J. Gardner
James Garland
Robin L. Garland
Alisha M. Garrett
Sarrah L. Gastilo
Ronny G. George
Richard J. Gerth, Jr.
Dana L. Gilbert
Clara A. Gilliam
James R. Gilmore
Christine K. Gish
J. Christopher Glenney
Jenny C. Go
Edie L. Gobert
R. Dale Golden, Sr.
Susan Gomez
Micho L. Grady
Joel E. Graeter
Georg'n Granberry
Susan L. Gray
Morgan M. Green
Laura R. Greenlee
Marcelitte L. Grier
Timothy S. Grier
Shawn H. Griffin
Carol L. Groves
Donna B. Guy
Stephanie L. Hacker
Angela M. Halfpenny
Rosalin R. Hall
Vickey J. Hall
Deanna Hamilton
LaQuenatt R. Hamn
Bruce A. Hand
Stephanie T. Hankins
Patricia A. Hanna
Tammy D. Harden
Lawrence S. Hardin
Karen G. Hargrove
Denise L. Harmon
Jensy R. Harmon
Kathy A. Harmon
Melissa E. Harper
Valarie S. Harper
Melissa M. Harris
Tammy W. Harrold
Mary R. Harter
Tabitha D. Hartley
Brandi L. Hassell
Patricia L. Hawkins
Lavonne I. Helm

Gwendolyn P. Helmer
Patricia G. Hendrix
Cynthia E. Hernandez
Eva L. Hernandez
April L. Herschbach
Michelle M. Hicks
Jennifer M.
Higginbotham
Roland Higginbotham
James Hill
Jeffrey M. Hill
Kimberly M. Hill
Hollie M. Hilliard
Michael G. Hines
Jennifer L. Hinkle
Susan J. Hinson
Carla D. Hitt
Georgette H. Hodges
April E. Hofmann
Courtney T. Holcomb
Steven K. Holder
Teri J. Holley
Sandra L. Holley
Caldwell
Whitney M. Hollis
Carla J. Holmen
Amanda D. Homann
Justin S. Hooper
Mary B. Hooper
Keith A. Hopsen
Bonnie E. Horick
Deanna M. Hornbuckle
Sara L. Housley
Susan F. Howes
Fredda A. Hudson
Mikayla B. Huff
Casey L. Hull
Dana D. Hulstine
Latisha M. Humber
Rita L. Humphrey
Tami U. Hurley
Melissa J. Hurst
Jamie L. Hutchins
Kara J. Hutton
Jeff G. Hyde
Stephanie A. Hyde
Shelly A. Hyles
Manuela I. Ibarra
Edgardo T. Imperial, Jr.
Elizabeth A. Isabell
Eleanor W. Jackson
Kiva S. Jackson
Leslie R. Jackson
Patricia F. Jackson
Paula J. Jackson
Quandralynn Jackson
Sherry K. Jenkins
Vicki M. Johns
Cynthia A. Johnson

Dennis P. Johnson
Robert F. Johnson
Tonya R. Johnson
Victoria L. Johnson
Jasmine M. Jones
Jennifer K. Jones
Kipper L. Jones
Lauren E. Jones
Megan L. Jones
Melinda J. Jones
Sheila A. Jones
Stephanie L. Jones
Suzanne W. Jones
Susan A. Joslin
Ronald W. Junot
James D. Keith
William A. Kelley
Julie M. Kelsey
Amanda L. Kennedy
Casey Kennedy
Jennifer D. Kennedy
Tami K. Kennedy
Zelma L. Kennedy
James A. Kennerly
Jackie G. Kennimer
Deborah A. Kersh
Jill A. Key
Reann Kiang
Rhonda A. Kilsby
Kasey J. Kimbrough
Misty M. Kimbrough
Gena D. King
Jean M. King
Jerry W. King, Sr.
Sundi Y. Kissinger
Linda R. Knox
Mary K. Kohls
Stephanie J. Koppel
Brett S. Lackey
C. Marie Lacy
Wendy M. LaFaitt
Debra B. Lambert
Nicole J. Lambeth
Shauna G. Lambeth
Deana K. Lancaster
Allison V. Lane
Emily J. Langford
Nancy Lara Fajardo
Rhashamekia J. Law
Tammy L. Lawless
Irene G. Leatherwood
Madai Ledesma
Geniece R. Lee
Christine M. Legler
Karleen K. Lennon
Danielle J. Letizia
Micaela M. Lewis
Yolanda M. Lewis
Matthew R. Link
Brittany M. Little
Charles R. Little
Dora M. Locke
Nela W. Long
Michelle C. Lott
D. Chris Loyd
Leigh Ann Lozano
Chealsey L. Lyon
Cindy R. Machristie
Jamie L. Maddox
Terry L. Maddox
Judith H. Magruder
Don R. Mahana
Deborah A. Mahler
Gregory M. Mallett
S. Pat Malone
Ben Y. March
Diane C. Martin
Donna L. Martin
Glenda T. Martin
Aaron D. Martinez
Amy M. Massey
Stacey L. Matheny
Ashley S. Mathews
Angie B. Matson
Lisa C. Matthews
Roxann Matthews
Patusa Mayfield
Chandy E. Maynard
Debi A. Maynard
Gary P. Maynard
Rachel V. McBride
Amanda K. McCarty
Glenda B. McCloud
Logan W. McClure
Deborah F. McCowin
J. Wyley McCoy
Jeanette Y. McFadden
Tammy Y. McGee
Jana J. McGill
Melanie R. McGill
Yolonda McGowen
Christina C. McGrew
Marilyn R. McKellar
Kristine A. McLaughlin
Sarah A. McLean
Bill J. McLester
Teresa A. Meeks
Antonia Melendez
Shaina L. Melton
Maria F. Mendez
Kati N. Metzigg
Angela B. Miles
Ann M. Miller
April E. Miller
Gary D. Miller
Nadia N. Miller
Rachel A. Miller
John J. Mimier II
Kimberly J. Mimier
Debra E. Minnick
Maria Mireles Caballero
Aubry L. Mitchell
Donald J. Mitchell
Kristen D. Mitchell
Edward G. Moa
Amanda K. Mongold
Carla Y. Montgomery
Jennifer M. Mooney
Nathan W. Moore
Patricia A. Moore
Tabitha K. Moore
Jean M. Moorhead
Ana M. Morales
Ana Lyn L. Morgan
Cheryl A. Morgan
Delightful L. Morris
Jamie L. Morrison
Lori L. Moseley
Stephanie D. Moseley
Allison A. Mosley
Shelly L. Mosley
Patricia D. Mott
Sara E. Mourad
Cynthia L. Mrdjenovich
Samantha K. Mullens
Nina J. Mullican
Shae D. Mullins
Barbara K. Mundt
Lydia A. Munoz
Liz Murphy
Leigh A. Murray
Reverend Stephen Murray
Lisa P. Musselwhite
Felicia K. Myrick
M. Cristina Najera
Jackie S. Neault
Shannon M. Neely
Candace R. Nelson
Karolyn J. Nelson
Tiffany G. Newburn
David E. Newkirk
Cathy L. Newman
Michael C. Newsom
Kayla E. Newsome
Moria A. Niekamp
Amanda Nielsen
Dr. Brett R. Noteware
Carmen M. Nunn
Kristen Oertling Collins
Yolandra L. Oliver
Vicki R. Olliff
Sara L. Oltmann
Meghan J. Orr
Amy A. Overbay
Angela E. Owens
Lisa A. Owens
Sandra S. Palacios
Sonia Z. Palacios
Christine M. Pannell
Bobby J. Parker
Tina M. Parker
Lesa R. Partin
Adrian M. Pate
Michele L. Pate Dooley
Lisa M. Patrick
Tisha M. Patterson
Jennifer L. Paul
Cathy S. Pavageau
Maureen L. Pawelkowski
Kristi L. Payne
Monica P. Paz
Angie Z. Peden
Bethany M. Penny
Jabeth T. Percell
Jennifer L. Perkins
Shelley L. Perkins
Heath R. Perry
Ruby N. Perry
Bonnie A. Peterson
Jacqueline Pettigrew
Brandi L. Phillips
Kristi L. Phillips
Brad Pike
Deborah L. Pool
Daniel Posada
Crystal J. Power
Daphne L. Pratt
Scott C. Pridgen
Elaine Priller
Daryl P. Pritchard
Jason J. Proctor
Ashley D. Pruitt
Jennifer R. Pruitt
Maria Concepcion Pujalte
Rebekah L. Quarles
Teresita C. Quibrall
Cindy A. Rainer
Juana R. Ramirez
Chrissy L. Ramsey
Penny A. Range
Joanna R. Rankin
James W. Rapp
Janice J. Raymond
K. Leon Renfroe
Eva C. Reyes
Connie P. Reynolds
Tracey L. Reynolds
Krista N. Rhodes
Robert M. Rhodes, Jr.
Kathy C. Richardson
Beverly K. Richmond
Ronald A. Rico
R. Shannon Riddle
Cyrus D. Ridenour
Andrea J. Ries
Thomas G. Rioux
Suzie T. Rippy
Courtney L. Ritch
Michael R. Rivera
Sarah J. Rivera
Jill F. Roach
Linda P. Robert
Charlotte J. Roberts
Juna D. Roberts
Tabitha A. Robertson
Gayla C. Robinson
Lisa M. Robinson
Mary A. Robinson
Shelley R. Rockwell
James D. Rodgers
Jo An M. Rodriguez
Kara D. Rogers
Eymy Rosales Sandoval
Courtney M. Ross
Freda D. Ross
Patsy Roundtree
Robin W. Rowan
Pamela S. Ruehrmund
Shelly R. Rutherford
Stephanie L. Sampson
Krystal L. Sanders
Maria G. Santibanez
Kimberly S. Sauceman
Tracy L. Sawyer
Sandra K. Schafer
Van E. Schmutz
Laura L. Schneider
Ronnie J. Schomerus
Kristi N. Schumann
Barbara E. Schwab
Micki J. Scoggins
Wanda G. Scott
Jason P. Sebring
Kevin M. Seitz
Amy M. Selvidge
April P. Serad
Robert J. Sevensing
Vicky R. Shackelford
Christina M. Shelton
Cortney A. Shelton
Justin E. Shelton
Melinda K. Shelton
Melissa K. Shelton
Virginia K. Sigler
Julie L. Sigmund
Misty R. Simmons
Lacy N. Simpson
Marcia A. Sims
Linda L. Sipes
Mark K. Skains
Sandra A. Small
Linda K. Smiley
Donna M. Smith
Jelaine E. Smith
Lashley A. Smith
Nicole M. Smith
Patricia B. Sorick
Denise A. Sorrells
Tina D. Spain
Ginger B. Spaude
Patricia B. Spears
James E. Speier, Jr.
Megan R. Spencer
Olivia D. Spencer
Tarneshia L. Spencer
Penny L. Spivey
Elizabeth B. Spraggins
Kelli L. St. Clair
Daphne L. Stafford
Julie E. Stafford
Rebecca L. Stanwood
John T. Stayton
Amber M. Steele
Laura A. Steele
Amy R. Steen
Pamela N. Stephenson
Vera Stewart
Brenna J. Stidham
T. Jefferey Stiefer
Consuelo Stokes
Ernest R. Stokes
Robin S. Stokes
Charlcie R. Stone
Marsha K. Stone
Tevin A. Storr
Veronica L. Story
Sydney N. Strickland
Brandi C. Strom
Melody H. Stroud
Michael A. Strout
Nathan P. Stutes
Terri Sumpter
Rebecca A. Sutherland
Dana M. Swann
Vu D. Ta
R. Renee Tannery
Labrina S. Tave
Jacquelyn C. Taylor
Mariah I. Taylor
Marianne Taylor
Melissa G. Taylor
Sabrina L. Taylor
Terri R. Teeler
Sandra I. Terrazas
Marvetta J. Thomas
Dr. Patrick R. Thomas
Rachel J. Thomas
Kenda Thompson
Samantha Thompson
W. Adam Thurman
Paula A. Tillison
Bonnie M. Tincer
Chris M. Todd
Tina R. Todd
Joieselyn L. Toling
Eric R. Tomez
Theresa J. Tomlin
Norma J. Tompkins
Mustapha Touray
Katherine S. Townsend
Mike Treadway
Vivian E. Trimble
Larry C. Troquille
Deanna L. Tunnell
Clinton L. Turner
Landra K. Turner White
Wendi R. Tuz
Tina D. Un
Janet L. Vance
Sara G. Vangunten
Jennifer G. Vann
Glenn S. Vaughn
Sharon A. Vickery
Aimee M. Vincent
Jessica L. Waites
Kelli D. Walker
Shawn Walker
Stacy R. Walker
Amber B. Wallace
Judith A. Walters
Karen L. Ward
Chelsie N. Warren
Brandy C. Washington
Takisha T. Washington
Thaddeus W. Washington
Jana L. Watkins
Miranda G. Weatherford
Shannon P. Webb
Tammy R. Wedeking
Rosaleen Weiss
Carol Weldon
Kathy L. Werner
Kerri J. West
Mark A. West
Rhodi West Nixon
Tina G. Whiddon
Beckie L. White
Elise E. White
Kelly L. White
Kristen K. White
Veronica White
Beverly K. Whitehurst
Sherry L. Whiteside
Cassie Widdows
Terry D. Widdows
T'Juaniequa B. Wideman
Wendy B. Wieland
Lucinda Y. Wilcher
Jennifer C. Wilder
Patricia C. Wiley
Alicia E. Williams
Jennie V. Williams
Michael Williams
Tamira L. Williams
Veronica M. Williams
Vickie R. Williams
Kathryn L. Williamson
Chelsea M. Willis
Christopher D. Willis
Kathy L. Willis
Samantha Willson
Shirley Wilson
Suzan G. Wilson
Ginny L. Winchell
Aaron J. Wind
Tara L. Womack
Jim Woodley
Lesley J. Wuerch
Jamie Crystal L. Wylie
Matthew A. Wylie
Marcus S. Yancy
Stephanie R. Yates
Kimberli A. Young
Regina P. Young
Tiffany A. Zempel
Laurie A. Ziegler
Barbara J. Zimmerman
Cheri L. Zucca



Sisters of the Zdzyry Convent with Sister Irene



The Sisters welcome a Japanese group to Poland



Procession honoring the Feast of Corpus Christi in Warsaw, Poland

Widening her mission field

One of our Foundation Champions has recently had a transformation herself. Sister Irene Asztemborska felt a calling to return to her country of birth, Poland. We asked her to describe her own *life transformations*, and to share her thoughts about how God continues to guide her in her Christian walk.

"The Lord works in mysterious ways, and my journey of change is not at an end. This year, I began feeling pulled towards my birthplace of Poland. I have prayed many hours about this longing, and in June I traveled back to Zdzyry, Poland, where I will be living and taking care of our elderly sisters. I will be serving as a nurse and also tending to their emotional and spiritual needs. We pray, work and enjoy meals together and are getting to know each other and I love them. I am looking forward to this new ministry in my life. I know that my journey is not complete, and I look forward to sharing my new adventures with you, my CHRISTUS family. Thanks be to God."

We at the CHRISTUS Trinity Mother Frances Foundation have always felt a special connection to this wonderful woman of God. She has transformed lives, made a positive impact on the communities we serve, and provided hope to patients and their loved ones. We are grateful that she has been a part of our lives.



Sister Irene reunited with her family in Poland

"For where your treasure is, there your heart will be also."

Matthew 6:21





CHRISTUS Trinity Mother Frances Health System complies with applicable Federal civil rights laws and does not discriminate on the basis of race, color, national origin, age, disability, or sex. CHRISTUS Health does not exclude people or treat them differently because of race, color, national origin, age, disability, or sex.

CHRISTUS Trinity Mother Frances Health System:

- Provides free aids and services to people with disabilities to communicate effectively with us, such as:
 - o Qualified sign language interpreters
 - o Written information in other formats (large print, audio, accessible electronic formats, other formats)
- Provides free language services to people whose primary language is not English such as:
 - o Qualified interpreters
 - o Information written in other languages

If you need these services, contact a hospital employee. If you believe that CHRISTUS Trinity Mother Frances Health System has failed to provide these services or discriminated in another way on the basis of race, color, national origin,

age, disability, or sex, you can file a grievance with: Susan Willmann, MSN, RN, LSSBB, CHRISTUS Health, Civil Rights Coordinator, 919 Hidden Ridge, Irving, TX 75038. Telephone: 469-282-1298, Fax: 210-766-9468 CHRISTUS.CivilRights@christushealth.org. You can file a grievance in person or by mail, fax, or email. If you need help filing a grievance, Susan Willmann, MSN, RN, LSSBB, is available to help you. You can also file a civil rights complaint with the U.S. Department of Health and Human Services, Office for Civil Rights, electronically through the Office for Civil Rights Complaint Portal, available at <https://ocrportal.hhs.gov/ocr/portal/lobby.jsf>, or by mail or phone at: U.S. Department of Health and Human Services, 200 Independence Avenue, SW, Room 509F, HHH Building, Washington, D.C. 20201, 1-800-368-1019, 800-537-7697 (TDD) Complaint forms are available at <http://www.hhs.gov/ocr/office/file/index.html>.

ATENCIÓN: Si habla español, tiene a su disposición servicios gratuitos de asistencia lingüística. CHÚ Ý: Nếu bạn nói Tiếng Việt, có các dịch vụ hỗ trợ ngôn ngữ miễn phí dành cho bạn. 注意：如果您使用繁體中文，您可以免費獲得

語言協助服務。주의: 한국어를 사용하시는 경우, 언어 지원 서비스를 무료로 이용하실 수 있습니다. ملحوظة: إذا كنت تتحدث لغة، فإن خدمات المساعدة اللغوية متوفرة لك بالمجان. الحصول برقم خردان: اگر آپ اردو بولتے ہیں، تو آپ کو زبان کی مدد کی خدمات مفت میں دستیاب ہیں۔ 注意: Kung nagsasalita ka ng Tagalog, maaari kang gumamit ng mga serbisyo ng tulong sa wika nang walang bayad. ATENÇÃO: Si vous parlez français, des services d'aide linguistique vous sont proposés gratuitement.

توجّه: اگر یہ زبان فارسی گفتگو میں کنبہ، تسهیلات زبانی بصورتِ رایگان برای شما ACHTUNG: Wenn Sie Deutsch sprechen, stehen Ihnen kostenlos sprachliche Hilfsdienstleistungen zur Verfügung. ATENÇÃO: Se fala português, encontre-se disponíveis serviços linguísticos, grátis. ВНИМАНИЕ: Если вы говорите на русском языке, то вам доступны бесплатные услуги перевода. 注意事項: 日本語を話される場合、無料の言語支援をご利用いただけます。 注意: 如果您使用泰语，您可以免费获得语言协助服务。 注意: 如果您使用泰语，您可以免费获得语言协助服务。